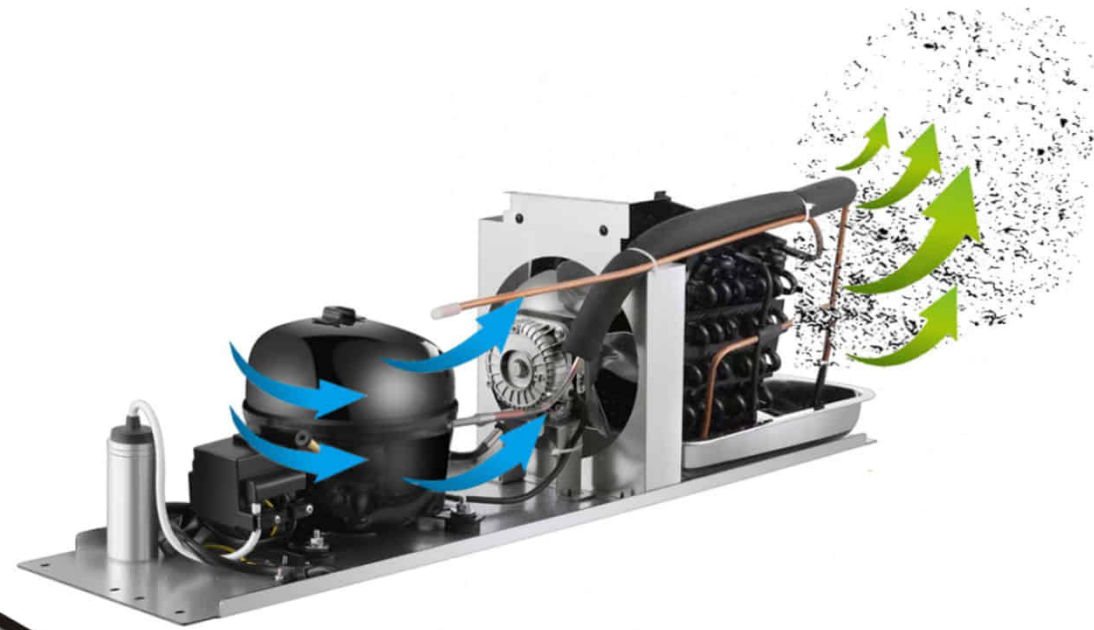




www.sub-equip.com



Commercial Refrigeration Product Catalog 2025-2026



- Reach-In Refrigeration
- Prep Table Refrigerator
- Grab and Go Display Refrigerator
- Blast Chiller/Freezer
- Merchandising Refrigeration
- Refrigerated Display Cases
- Dry Aging Cabinets
- Customize Refrigeration
- Undercounter Refrigeration
- Chef Base
- Workstation Refrigerator

Contact Us: info@sub-equip.com
sales@sub-equip.com

Canada: 3794 Victoria Park Ave. Toronto. Ontario. M2H 3H7

China: Unit 201, Building 2, No. 8 Science and Technology Eighth Road, Xingtan Industrial Zone Qixing Community, Xingtan Town, Shunde District, Foshan City, Guangdong Province, China

www.sub-equip.com

For a wider selection of products, kindly explore our website at



If the data and structure update, without notice, subject to material object.

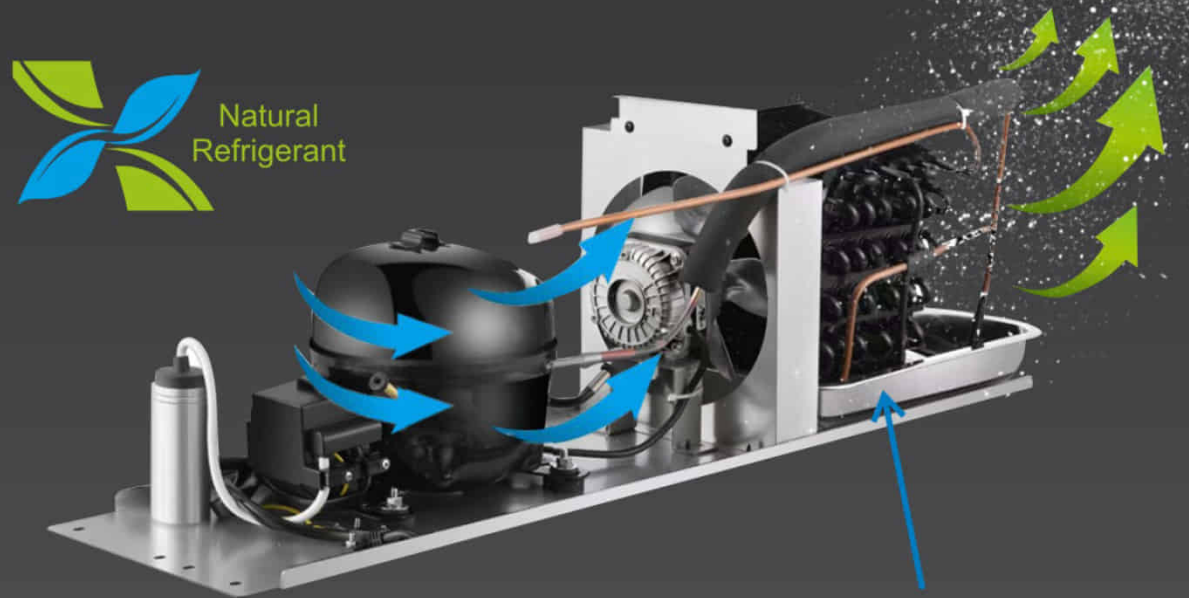




www.sub-equip.com

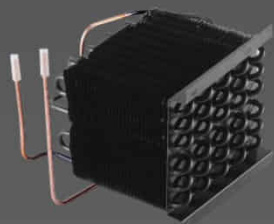
SUB-EQUIP ADVANTAGES

-Self-Cleaning Condenser Technology



-The condenser located within the condensation pan efficiently facilitates the evaporation of excess water

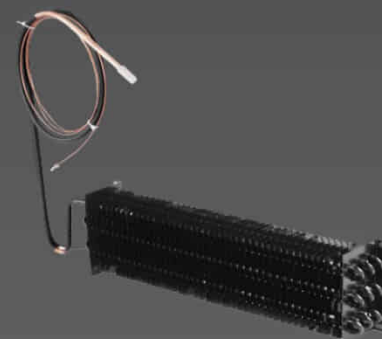
-Crafted from a single bent tube, this design incorporates only two welding joints, effectively reducing the risk of leaks



Condenser



Condenser



Evaporate Coil



www.sub-equip.com

ABOUT US

Foshan Jiaxuan Electrical Appliances Co., Ltd. specializes in the design, production, and sales of refrigeration and temperature/humidity control equipment. With industry expertise and advanced technology, the company has developed innovative products with independent intellectual property rights, establishing itself as a leader in the field.

Our main products include:

- Refrigeration Workbench Series: Refrigerated worktables and prep tables
- Display Cabinets: Upright display cabinets, open display cases, cake showcases, and aging cabinets for beef maturation
- Refrigerators: Upright refrigerators and blast freezers
- Specialized Units: Beer cabinets, pizza cabinets, dry-aging cabinets, and more
- Refrigeration Units: Various air-handling equipment related to cooling and freezing

Committed to quality and innovation, Foshan Jiaxuan delivers reliable solutions for commercial refrigeration.

About our brand: sub-equip

Established in Canada in 2018, Sub-Equip is Foshan Jiaxuan's exclusive brand, created to support foodservice professionals with premium refrigeration products. Sub-Equip offers a diverse range of reliable, high-quality equipment tailored to meet the needs of the foodservice industry across Canada.



www.sub-equip.com



www.sub-equip.com

Our Mission:

To deliver high-performance refrigeration solutions that ensure the freshness, safety, and quality of stored products for the foodservice industry.

Sub-Equip Refrigeration is dedicated to providing energy-efficient, durable, and innovative refrigeration systems tailored to meet the evolving needs of our customers while maintaining exceptional service and support.

Our Vision:

To become a global leader in refrigeration technology by setting new standards in efficiency, reliability and sustainability.

Sub-Equip Refrigeration strives to empower foodservice professionals with advanced refrigeration solutions that enhance their operations and contribute to a more sustainable future.



Confirms to UL Standard 471
Certified to CSA Standard C22.2 No. 120



Certified to NSF/ANSI 7



www.sub-equip.com



CONTENTS

BLACK SWING GLASS DOOR MERCHANDISER REFRIGERATOR	01/04	UNDERCOUNTER FREEZER WITH DRAWER	31
BLACK SWING GLASS DOOR MERCHANDISER FREEZER	05	UNDERCOUNTER REFRIGERATOR WITH SIDE MOUNTED COMPRESSOR	32/34
BLACK SLIDING GLASS DOOR MERCHANDISER REFRIGERATOR	06	UNDERCOUNTER FREEZER WITH SIDE MOUNTED COMPRESSOR	34
PASS THROUGH REFRIGERATOR	07/08	UNDERCOUNTER REFRIGERATOR WITH SIDE MOUNTED COMPRESSOR & DRAWER	35
STAINLESS STEEL GLASS DOOR REACH-IN REFRIGERATOR	09/12	UNDERCOUNTER FREEZER WITH SIDE MOUNTED COMPRESSOR & DRAWER	36
STAINLESS STEEL GLASS DOOR REACH-IN FREEZER	12	SALAD & SANDWICH PRE TABLE	37/39
STAINLESS STEEL GLASS DOOR REACH-IN REFRIGERATOR WITH DRAWER	13	SALAD & SANDWICH PRE TABLE (REGULAR TOP REFRIGERATOR WITH DRAWER)	40
STAINLESS STEEL GLASS DOOR REACH-IN FREEZER WITH DRAWER	14	SALAD & SANDWICH PRE TABLE (MEGA TOP REFRIGERATOR WITH DRAWERS)	41
STAINLESS STEEL SOLID DOOR REACH-IN REFRIGERATOR	15/18	SALAD & SANDWICH PRE TABLE (WITH SIDE MOUNTED COMPRESSOR)	42/43
STAINLESS STEEL SOLID DOOR REACH-IN FREEZER	18	SALAD & SANDWICH PRE TABLE (REGULAR TOP REFRIGERATOR WITH SIDE MOUNTED COMPRESSOR & DRAWERS)	44
STAINLESS STEEL SOLID DOOR REACH-IN REFRIGERATOR WITH DRAWER	19	SALAD & SANDWICH PRE TABLE (MEGA TOP REFRIGERATOR WITH SIDE MOUNTED COMPRESSOR & DRAWERS)	45
STAINLESS STEEL SOLID DOOR REACH-IN FREEZER WITH DRAWER	20	SALAD & SANDWICH PRE TABLE (PRE TABLE WITH SNEEZE GLASS REFRIGERATOR)	46/48
DRY AGING CABINET	21/22	PIZZA PRE TABLE REFRIGERATOR	49/50
BLAST CHILLER/FREEZER	23/24	WORKSTATION REFRIGERATOR	51/52
CHEF BASE	25/26	GRAB N GO REFRIGERATOR (SELF-SERVE COUNTER CASE-CURVED ENDS)	53/54
UNDERCOUNTER REFRIGERATOR	27/29	GRAB N GO REFRIGERATOR (SELF-SERVE COUNTER CASE-SQUARE ENDS)	55/56
UNDERCOUNTER FREEZER	29	GRAG N GO REFRIGERATED AIR CURTAIN MERCHANDISER	57/58
UNDERCOUNTER REFRIGERATOR WITH DRAWER	30	CAKE DISPLAY SHOWCASE	59/60



www.sub-equip.com

MERCHANDISING GLASS DOOR REFRIGERATION



www.sub-equip.com

POWDER COAT CUSTOM FINISHES



•Air outlet designed to promote uniform interior temperature within the cabinet

•Black powder-coated steel

•Adjustable and heavy-duty epoxy-coated wire shelves for flexible storage options

•Front Casters equipped with Brakes

•White powder-coated steel

•PVC Sealing Strip

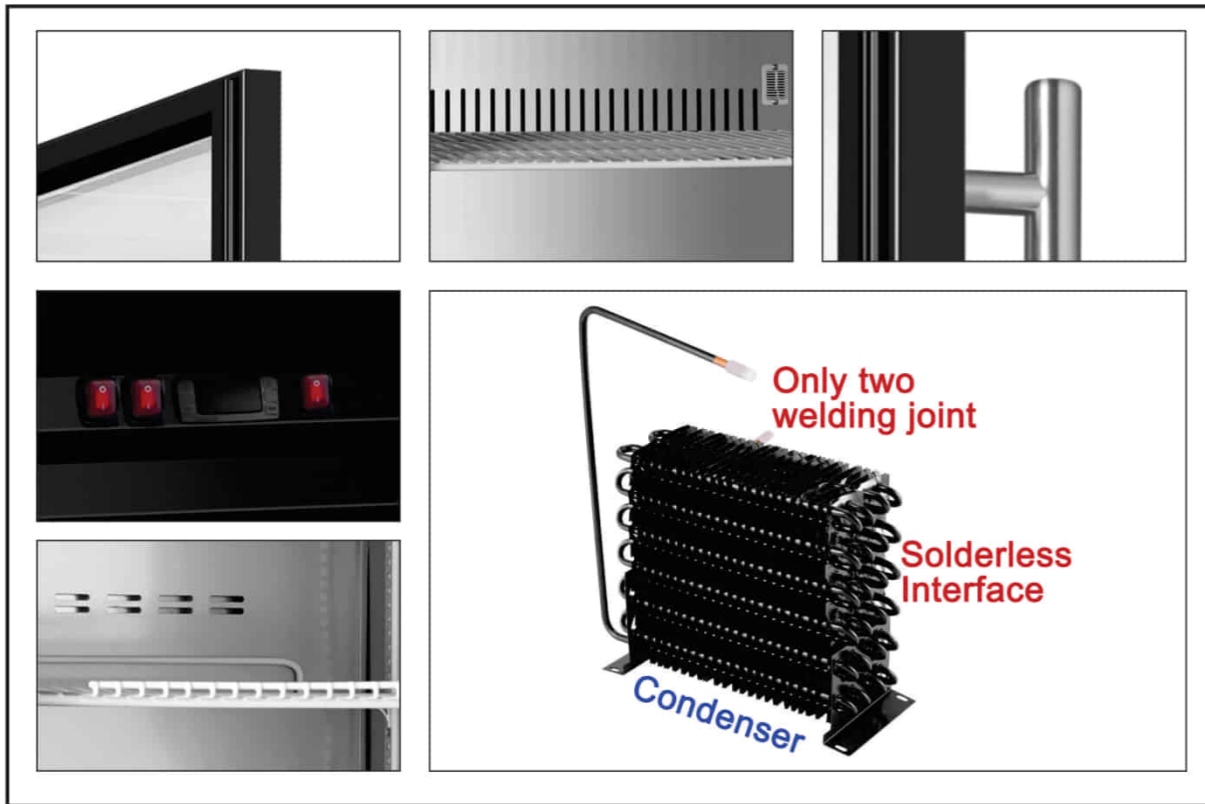
•Folder Handle

•Three-layer Tempered Glass

•Insider LED Light

•Temperature Controller






Black Swing Glass Door Merchandiser Refrigerator

-Interior temperature range: 1°C to 4°C (33°F to 40°F)



Features

- CFC free refrigerant and foam insulation
- Electronic thermostat and digital LED temperature display for accurate control and easy reading
- Self-closing swing door
- Air outlet designed to promote uniform interior temperature within the cabinet
- Energy efficient Low-e triple pane glass doors with heater on glass and inside door frame
- The coated copper tube, boasting a sturdy 0.7mm thickness, ensures durability.
- Crafted from a single bent tube, minimizing the risk of leaks with only two welding joints.
- The condenser is efficiently positioned inside the condensation pan to facilitate the evaporation of excess water.
- INTERIOR: White powder-coated steel
- EXTERIOR: Black powder-coated steel
- LED interior lighting to enhance product display
- Adjustable and heavy-duty epoxy-coated wire shelves for flexible storage options
- Easy to mount 4" casters (front casters with brakes) are standard with all units
- Electrical specifications: 115/60/1 with a NEMA 5-15P plug and a 10ft cord. Ⓢ
- Three-door freezer equipped with a 5-20P plug Ⓢ
- SGS & SGS Sanitation Certificate 

Model	Doors	Exterior Dimensions (W x D x H) (mm/inch)	Shelves	Voltage (V/Hz/Ph)	Elite Series Amps	Power (W/HP)	NEMA PLUG	N.W	G.W	Packing Size (W x D x H) (mm/inch)
CDM-B13R	Refrigerator 1 Door	575*605*2053 22 3/4 x 23 7/8 x 80 7/8	4	115/60 /1	4.5	450 / 0.61	5-15P	125 kg / 275 lbs	145kg / 319 lbs	575*605*2053 22 3/4 x 23 7/8 x 80 7/8
CDM-B16R	Refrigerator 1 Door	635*660*2053 25 x 26 x 80 7/8	4	115/60/1	5	550 / 0.75	5-15P	135 kg / 297 lbs	155kg / 341 lbs	635*660*2053 25 x 26 x 80 7/8
CDM-B23R	Refrigerator 1 Door	680*810*2053 26 3/4 x 32 x 80 7/8	4	115/60/1	5	550 / 0.75	5-15P	140 kg / 308 lbs	160kg / 352 lbs	680*810*2053 26 3/4 x 32 x 80 7/8
CDM-B36R	Refrigerator 2 Doors	1003*810*2053 39 1/2 x 32 x 80 7/8	8	115/60/1	6.5	650 / 0.88	5-15P	184 kg / 404 lbs	216kg / 475 lbs	1003*810*2053 39 1/2 x 32 x 80 7/8
CDM-B42R	Refrigerator 2 Doors	1220*810*2053 48 x 32 x 80 7/8	8	115/60/1	7	700 / 0.95	5-15P	210 kg / 462 lbs	250kg / 550 lbs	1220*810*2053 48 x 32 x 80 7/8
CDM-B48R	Refrigerator 2 Doors	1370*810*2053 54 x 32 x 80 7/8	8	115/60/1	8.5	900 / 1.22	5-15P	230 kg / 506 lbs	260kg / 572 lbs	1370*810*2053 54 x 32 x 80 7/8
CDM-B72R	Refrigerator 3 Doors	2050*810*2053 80 7/8 x 32 x 80 7/8	12	115/60/1	8.5	900 / 1.22	5-15P	320 kg / 704 lbs	360kg / 792 lbs	2050*810*2053 80 7/8 x 32 x 80 7/8



www.sub-equip.com



www.sub-equip.com

Black Swing Glass Door Merchandiser Freezer

-Interior temperature range:-18°C to -22°C (0° F to -7°F)



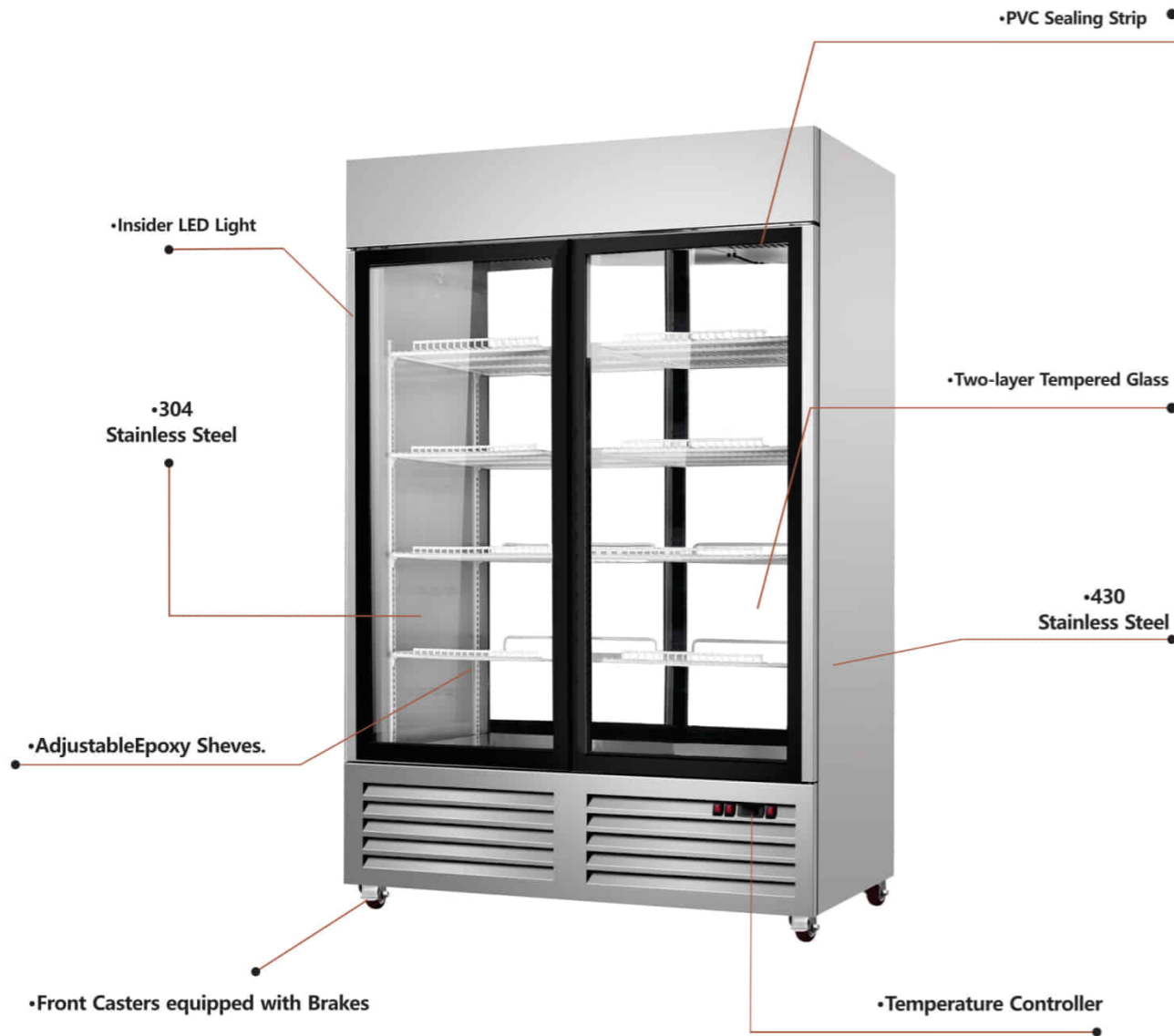
Model	Doors	Exterior Dimensions (W x D x H) (mm/inch)	Shelves	Voltage (V/Hz/Ph)	Elite Series Amps	Power (W/HP)	NEMA PLUG	N.W	G.W	Packing Size (W x D x H) (mm/inch)
CDM-B13F	Freezer 1 Door	575*605*2053 22 3/4 x 23 7/8 x 80 7/8	4	115/60 /1	4.5	450 / 0.61	5-15P	125 kg / 275 lbs	145 kg / 319 lbs	635*665*2253 25 x 26 1/4 x 88 3/4
CDM-B16F	Freezer 1 Door	635*660*2053 25 x 26 x 80 7/8	4	115/60/1	5	550 / 0.75	5-15P	135 kg / 297 lbs	155 kg / 341 lbs	695*720*2253 27 1/2 x 28 3/8 x 88 3/4
CDM-B23F	Freezer 1 Door	680*810*2053 26 3/4 x 32 x 80 7/8	4	115/60/1	5	550 / 0.75	5-15P	140 kg / 308 lbs	160 kg / 352 lbs	740*890*2253 29 1/4 x 35 x 88 3/4
CDM-B36F	Freezer 2 Doors	1003*810*2053 39 1/2 x 32 x 80 7/8	8	115/60/1	6.5	650 / 0.88	5-15P	184 kg / 405 lbs	216 kg / 475 lbs	1063*890*2253 41 7/8 x 35 x 88 3/4
CDM-B42F	Freezer 2 Doors	1220*810*2053 48 x 32 x 80 7/8	8	115/60/1	7	700 / 0.95	5-15P	210 kg / 462 lbs	250 kg / 550 lbs	1280*870*2253 50 1/2 x 34 1/4 x 88 3/4
CDM-B48F	Freezer 2 Doors	1370*810*2053 54 x 32 x 80 7/8	8	115/60/1	8.5	900 / 1.22	5-15P	230 kg / 506 lbs	260 kg / 572 lbs	1430*890*2253 56 3/8 x 35 x 88 3/4
CDM-B72F	Freezer 3 Doors	2050*810*2053 80 7/8 x 32 x 80 7/8	12	115/60/1	12	1400 / 1.9	5-20P	320 kg / 704 lbs	360 kg / 792 lbs	2110*890*2253 83 x 35 x 88 3/4

Black Sliding Glass Door Merchandiser Refrigerator

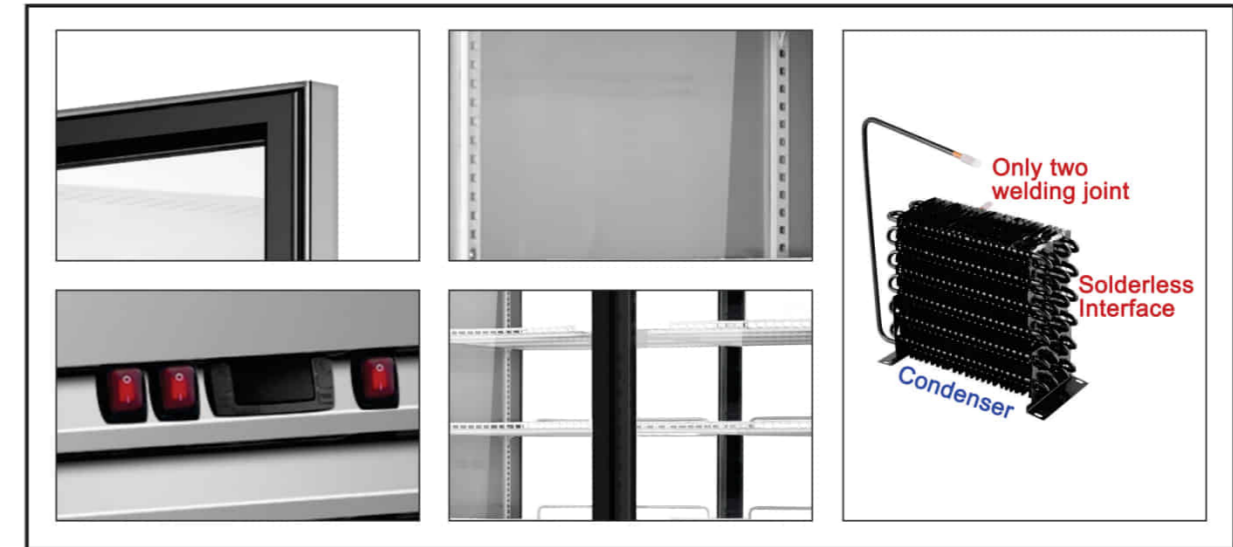
-Interior temperature range:1°C to 4°C (33°F to 40°F)



Model	Doors	Exterior Dimensions (W x D x H) (mm/inch)	Shelves	Voltage (V/Hz/Ph)	Elite Series Amps	Power (W/HP)	NEMA PLUG	N.W	G.W	Packing Size (W x D x H) (mm/inch)
CDM-B36SR	Refrigerator 2 Doors	1003*760*2053 39 1/2 x 30 x 80 7/8	8	115/60/1	6.5	650 / 0.88	5-15P	170 kg / 374 lbs	196 kg / 431 lbs	1063*820*2253 41 7/8 x 32 3/8 x 88 3/4
CDM-B42SR	Refrigerator 2 Doors	1220*760*2053 48 x 30 x 80 7/8	8	115/60/1	7	700 / 0.95	5-15P	198 kg / 436 lbs	235 kg / 517 lbs	1280*820*2253 50 1/2 x 32 3/8 x 88 3/4
CDM-B48SR	Refrigerator 2 Doors	1370*760*2053 54 x 30 x 80 7/8	8	115/60/1	8.5	900 / 1.22	5-15P	215 kg / 473 lbs	250 kg / 550 lbs	1430*820*2253 56 3/8 x 32 3/8 x 88 3/4
CDM-B72SR	Refrigerator 3 Doors	2050*760*2053 80 7/8 x 30 x 80 7/8	12	115/60/1	8.5	900 / 1.22	5-15P	286 kg / 630 lbs	317 kg / 697 lbs	2110*820*2253 83 x 32 3/8 x 88 3/4



Stainless Steel Pass Through Refrigerator



Features

- CFC free refrigerant and foam insulation
- Electronic thermostat and digital LED temperature display for accurate control and easy reading
- Air outlet designed to promote uniform interior temperature within the cabinet
- The coated copper tube, boasting a sturdy 0.7mm thickness, ensures durability. Crafted from a single bent tube, minimizing the risk of leaks with only two welding joints.
- The condenser is efficiently positioned inside the condensation pan to facilitate the evaporation of excess water.
- INTERIOR: 304 Stainless Steel
- EXTERIOR: 430 Stainless Steel
- LED interior lighting to enhance product display
- Adjustable and heavy-duty epoxy-coated wire shelves for flexible storage options
- Easy to mount 4" casters (front casters with brakes) are standard with all units
- Interior temperature range: 1°C to 4°C (33°F to 40°F)
- Electrical specifications: 115/60/1 with a NEMA 5-15P plug and a 10ft cord.
- SGS & SGS Sanitation Certificate

-Interior temperature range: 1°C to 4°C (33°F to 40°F)

Model	Doors & Drawers	Exterior Dimensions (W x D x H) (mm/inch)	Shelves	Voltage (V/Hz/Ph)	Elite Series Amps	Power (W/HP)	NEMA PLUG	N.W	G.W	Packing Size (W x D x H) (mm/inch)
CDM-48T	Refrigerator 4 Doors	1220*760*2053 48 x 30 x 80 7/8	8	115/60/1	7.5	800 / 1.1	5-15P	230 kg / 506 lbs	265 kg / 583 lbs	1280*820*2253 50 1/2 x 32 3/8 x 88 3/4



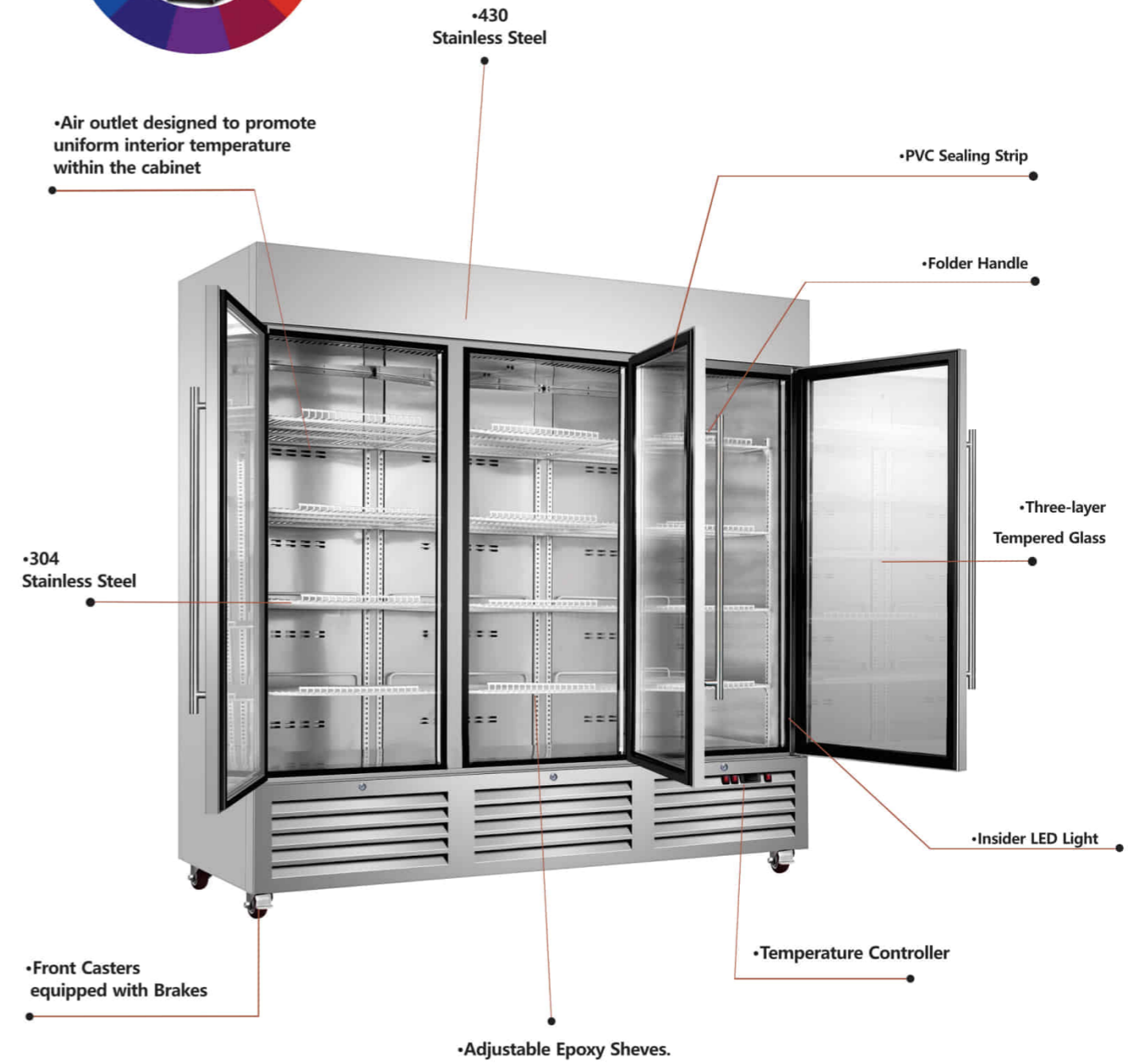
www.sub-equip.com

STAINLESS STEEL GLASS DOOR REACH-IN REFRIGERATION



www.sub-equip.com

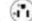


POWDER COAT CUSTOM FINISHES



Stainless Steel Glass Door Reach-In Refrigeration



Features

- CFC free refrigerant and foam insulation
- Electronic thermostat and digital LED temperature display for accurate control and easy reading
- Self-closing swing door
- Air outlet designed to promote uniform interior temperature within the cabinet
- Energy efficient Low-e triple pane glass doors with heater on glass and inside door frame
- The coated copper tube, boasting a sturdy 0.7mm thickness, ensures durability. Crafted from a single bent tube, minimizing the risk of leaks with only two welding joints.
- The condenser is efficiently positioned inside the condensation pan to facilitate the evaporation of excess water.
- INTERIOR: 304 Stainless Steel
- EXTERIOR: 430 Stainless Steel
- LED interior lighting to enhance product display
- Adjustable and heavy-duty epoxy-coated wire shelves for flexible storage options
- Easy to mount 4" casters (front casters with brakes) are standard with all units
- Electrical specifications: 115/60/1 with a NEMA 5-15P plug and a 10ft cord. 
- Three-door freezer equipped with a 5-20P plug 
- SGS & SGS Sanitation Certificate 

Stainless Steel Glass Door Reach-In Refrigerator

-Interior temperature range: 1°C to 4°C (33°F to 40°F)

Model	Doors	Exterior Dimensions (W x D x H) (mm/inch)	Shelves	Voltage (V/Hz/Ph)	Elite Series Amps	Power (W/HP)	NEMA PLUG	N.W	G.W	Packing Size (W x D x H) (mm/inch)
C-13RG	Refrigerator 1 Door	575*605*2053 22 3/4 x 23 7/8 x 80 7/8	4	115/60/1	4.5	450 / 0.61	5-15P	125 kg / 275 lbs	145 kg / 319 lbs	635*665*2253 25 x 26 1/4 x 88 3/4
C-19RG	Refrigerator 1 Door	680*650*2053 26 3/4 x 25 5/8 x 80 7/8	4	115/60/1	5	550 / 0.75	5-15P	146 kg / 321 lbs	166 kg / 365 lbs	740*710*2253 29 1/4 x 28 x 88 3/4
C-27RG	Refrigerator 1 Door	680*810*2053 26 3/4 x 32 x 80 7/8	4	115/60/1	5	550 / 0.75	5-15P	155 kg / 341 lbs	175 kg / 385 lbs	740*890*2253 29 1/4 x 35 x 88 3/4
C-35RG	Refrigerator 2 Doors	1003*810*2053 39 1/2 x 32 x 80 7/8	8	115/60/1	6.5	650 / 0.88	5-15P	188 kg / 414 lbs	220 kg / 484 lbs	1063*890*2253 41 7/8 x 35 x 88 3/4
C-48RG	Refrigerator 2 Doors	1220*810*2053 48 x 32 x 80 7/8	8	115/60/1	6.5	650 / 0.88	5-15P	232 kg / 510 lbs	265 kg / 583 lbs	1280*890*2253 50 1/2 x 35 x 88 3/4
C-54RG	Refrigerator 2 Doors	1370*810*2053 54 x 32 x 80 7/8	8	115/60/1	8	850 / 1.15	5-15P	272 kg / 598 lbs	306 kg / 673 lbs	1430*890*2253 56 3/8 x 35 x 88 3/4
C-81RG	Refrigerator 3 Doors	2050*810*2053 80 7/8 x 32 x 80 7/8	12	115/60/1	9	1000 / 1.36	5-15P	358 kg / 788 lbs	394 kg / 867 lbs	2110*890*2253 83 x 65 x 88 3/4

Stainless Steel Glass Door Reach-In Freezer

-Interior temperature range: -18°C to -22°C (0° F to -7°F)

Model	Doors	Exterior Dimensions (W x D x H) (mm/inch)	Shelves	Voltage (V/Hz/Ph)	Elite Series Amps	Power (W/HP)	NEMA PLUG	N.W	G.W	Packing Size (W x D x H) (mm/inch)
C-13FG	Freezer 1 Door	575*605*2053 22 3/4 x 23 7/8 x 80 7/8	4	115/60/1	4.5	450 / 0.61	5-15P	125 kg / 275 lbs	145 kg / 319 lbs	635*665*2253 25 x 26 1/4 x 88 3/4
C-19FG	Freezer 1 Door	680*650*2053 26 3/4 x 25 5/8 x 80 7/8	4	115/60/1	5	550 / 0.75	5-15P	146 kg / 321 lbs	166 kg / 365 lbs	740*710*2253 29 1/4 x 28 x 88 3/4
C-27FG	Freezer 1 Door	680*810*2053 26 3/4 x 32 x 80 7/8	4	115/60/1	5	550 / 0.75	5-15P	155 kg / 341 lbs	175 kg / 385 lbs	740*890*2253 29 1/4 x 35 x 88 3/4
C-35FG	Freezer 2 Doors	1003*810*2053 39 1/2 x 32 x 80 7/8	8	115/60/1	6.5	650 / 0.88	5-15P	188 kg / 414 lbs	220 kg / 484 lbs	1063*890*2253 41 7/8 x 35 x 88 3/4
C-48FG	Freezer 2 Doors	1220*810*2053 48 x 32 x 80 7/8	8	115/60/1	7	700 / 0.95	5-15P	232 kg / 510 lbs	265 kg / 583 lbs	1280*890*2253 50 1/2 x 35 x 88 3/4
C-54FG	Freezer 2 Doors	1370*810*2053 54 x 32 x 80 7/8	8	115/60/1	8.5	900 / 1.22	5-15P	272 kg / 598 lbs	306 kg / 673 lbs	1430*890*2253 56 3/8 x 35 x 88 3/4
C-81FG	Freezer 3 Doors	2050*810*2053 80 7/8 x 32 x 80 7/8	12	115/60/1	12	1400 / 1.9	5-20P	358 kg / 789 lbs	394 kg / 867 lbs	2110*890*2253 83 x 65 x 88 3/4



www.sub-equip.com

Stainless Steel Glass Door Reach-In Refrigerator with Drawer

-Interior temperature range: 1°C to 4°C (33°F to 40°F)



Model	Doors & Drawers	Exterior Dimensions (W x D x H) (mm/inch)	Shelves	Voltage (V/Hz/Ph)	Elite Series Amps	Power (W/HP)	NEMA PLUG	N.W	G.W	Packing Size (W x D x H) (mm/inch)
C-19RG-1D	Refrigerator 1 Door & 1 Drawer	680*650*2053 26 3/4 x 25 5/8 x 80 7/8	3	115/60/1	5	550 / 0.75	5-15P	150 kg / 330 lbs	170 kg / 374 lbs	740*710*2253 29 1/4 x 28 x 88 3/4
C-19RG-2D	Refrigerator 1 Door & 2 Drawers	680*650*2053 26 3/4 x 25 5/8 x 80 7/8	2	115/60/1	5	550 / 0.75	5-15P	164 kg / 361 lbs	184 kg / 405 lbs	740*710*2253 29 1/4 x 28 x 88 3/4
C-27RG-1D	Refrigerator 1 Door & 1 Drawer	680*810*2053 26 3/4 x 32 x 80 7/8	3	115/60/1	5	550 / 0.75	5-15P	163 kg / 359 lbs	183 kg / 403 lbs	740*890*2253 29 1/4 x 35 x 88 3/4
C-27RG-2D	Refrigerator 1 Door & 2 Drawers	680*810*2053 26 3/4 x 32 x 80 7/8	2	115/60/1	5	550 / 0.75	5-15P	171 kg / 376 lbs	191 kg / 420 lbs	740*890*2253 29 1/4 x 35 x 88 3/4
C-35RG-2D	Refrigerator 2 Doors & 2 Drawers	1003*810*2053 39 1/2 x 32 x 80 7/8	6	115/60/1	6.5	650 / 0.88	5-15P	196 kg / 431 lbs	228 kg / 502 lbs	1063*890*2253 41 7/8 x 35 x 88 3/4
C-35RG-4D	Refrigerator 2 Doors & 4 Drawers	1003*810*2053 39 1/2 x 32 x 80 7/8	4	115/60/1	6.5	650 / 0.88	5-15P	204 kg / 449 lbs	236 kg / 519 lbs	1063*890*2253 41 7/8 x 35 x 88 3/4
C-48RG-2D	Refrigerator 2 Doors & 2 Drawers	1220*810*2053 48 x 32 x 80 7/8	6	115/60/1	6.5	650 / 0.88	5-15P	248 kg / 546 lbs	281 kg / 618 lbs	1280*890*2253 50 1/2 x 35 x 88 3/4
C-48RG-4D	Refrigerator 2 Doors & 4 Drawers	1220*810*2053 48 x 32 x 80 7/8	4	115/60/1	6.5	650 / 0.88	5-15P	264 kg / 581 lbs	291 kg / 653 lbs	1280*890*2253 50 1/2 x 35 x 88 3/4
C-54RG-2D	Refrigerator 2 Doors & 2 Drawers	1370*810*2053 54 x 32 x 80 7/8	6	115/60/1	8.5	900 / 1.22	5-15P	277 kg / 610 lbs	311 kg / 684 lbs	1430*890*2253 56 3/8 x 35 x 88 3/4
C-54RG-4D	Refrigerator 2 Doors & 4 Drawers	1370*810*2053 54 x 32 x 80 7/8	4	115/60/1	8.5	900 / 1.22	5-15P	282 kg / 620 lbs	316 kg / 695 lbs	1430*890*2253 56 3/8 x 35 x 88 3/4
C-81RG-2D	Refrigerator 3 Doors & 2 Drawers	2050*810*2053 80 7/8 x 32 x 80 7/8	10	115/60/1	9	1000 / 1.36	5-15P	374 kg / 823 lbs	410 kg / 902 lbs	2110*890*2253 83 x 35 x 88 3/4
C-81RG-3D	Refrigerator 3 Doors & 3 Drawers	2050*810*2053 80 7/8 x 32 x 80 7/8	9	115/60/1	9	1000 / 1.36	5-15P	382 kg / 840 lbs	418 kg / 920 lbs	2110*890*2253 83 x 35 x 88 3/4
C-81RG-4D	Refrigerator 3 Doors & 4 Drawers	2050*810*2053 80 7/8 x 32 x 80 7/8	8	115/60/1	9	1000 / 1.36	5-15P	390 kg / 858 lbs	427 kg / 939 lbs	2110*890*2253 83 x 35 x 88 3/4
C-81RG-6D	Refrigerator 3 Doors & 6 Drawers	2050*810*2053 80 7/8 x 32 x 80 7/8	6	115/60/1	9	1000 / 1.36	5-15P	406 kg / 893 lbs	443 kg / 975 lbs	2110*890*2253 83 x 35 x 88 3/4



www.sub-equip.com

Stainless Steel Glass Door Reach-In Freezer with Drawer

-Interior temperature range: -18°C to -22°C (0° F to -7°F)



Model	Doors & Drawers	Exterior Dimensions (W x D x H) (mm/inch)	Shelves	Voltage (V/Hz/Ph)	Elite Series Amps	Power (W/HP)	NEMA PLUG	N.W	G.W	Packing Size (W x D x H) (mm/inch)
C-19FG-1D	Freezer 1 Door & 1 Drawer	680*650*2053 26 3/4 x 25 5/8 x 80 7/8	3	115/60/1	5	550 / 0.75	5-15P	150 kg / 330 lbs	170 kg / 374 lbs	740*710*2253 29 1/4 x 28 x 88 3/4
C-19FG-2D	Freezer 1 Door & 2 Drawers	680*650*2053 26 3/4 x 25 5/8 x 80 7/8	2	115/60/1	5	550 / 0.75	5-15P	164 kg / 361 lbs	184 kg / 405 lbs	740*710*2253 29 1/4 x 28 x 88 3/4
C-27FG-1D	Freezer 1 Door & 1 Drawer	680*810*2053 26 3/4 x 32 x 80 7/8	3	115/60/1	5	550 / 0.75	5-15P	163 kg / 359 lbs	183 kg / 403 lbs	740*890*2253 29 1/4 x 35 x 88 3/4
C-27FG-2D	Freezer 1 Door & 2 Drawers	680*810*2053 26 3/4 x 32 x 80 7/8	2	115/60/1	5	550 / 0.75	5-15P	171 kg / 376 lbs	191 kg / 420 lbs	740*890*2253 29 1/4 x 35 x 88 3/4
C-35FG-2D	Freezer 2 Doors & 2 Drawers	1003*810*2053 39 1/2 x 32 x 80 7/8	6	115/60/1	6.5	650 / 0.88	5-15P	196 kg / 431 lbs	228 kg / 502 lbs	1063*890*2253 41 7/8 x 35 x 88 3/4
C-35FG-4D	Freezer 2 Doors & 4 Drawers	1003*810*2053 39 1/2 x 32 x 80 7/8	4	115/60/1	6.5	650 / 0.88	5-15P	204 kg / 449 lbs	236 kg / 519 lbs	1063*890*2253 41 7/8 x 35 x 88 3/4
C-48FG-2D	Freezer 2 Doors & 2 Drawers	1220*810*2053 48 x 32 x 80 7/8	6	115/60/1	7	700 / 0.95	5-15P	248 kg / 546 lbs	281 kg / 618 lbs	1280*890*2253 50 1/2 x 35 x 88 3/4
C-48FG-4D	Freezer 2 Doors & 4 Drawers	1220*810*2053 48 x 32 x 80 7/8	4	115/60/1	7	700 / 0.95	5-15P	264 kg / 581 lbs	291 kg / 653 lbs	1280*890*2253 50 1/2 x 35 x 88 3/4
C-54FG-2D	Freezer 2 Doors & 2 Drawers	1370*810*2053 54 x 32 x 80 7/8	6	115/60/1	8.5	900 / 1.22	5-15P	277 kg / 610 lbs	311 kg / 684 lbs	1430*890*2253 56 3/8 x 35 x 88 3/4
C-54FG-4D	Freezer 2 Doors & 4 Drawers	1370*810*2053 54 x 32 x 80 7/8	4	115/60/1	8.5	900 / 1.22	5-15P	282 kg / 620 lbs	316 kg / 695 lbs	1430*890*2253 56 3/8 x 35 x 88 3/4
C-81FG-2D	Freezer 3 Doors & 2 Drawers	2050*810*2053 80 7/8 x 32 x 80 7/8	10	115/60/1	12	1400 / 1.9	5-20P	374 kg / 823 lbs	410 kg / 902 lbs	2110*890*2253 83 x 35 x 88 3/4
C-81FG-3D	Freezer 3 Doors & 3 Drawers	2050*810*2053 80 7/8 x 32 x 80 7/8	9	115/60/1	12	1400 / 1.9	5-20P	382 kg / 840 lbs	418 kg / 920 lbs	2110*890*2253 83 x 35 x 88 3/4
C-81FG-4D	Freezer 3 Doors & 4 Drawers	2050*810*2053 80 7/8 x 32 x 80 7/8	8	115/60/1	12	1400 / 1.9	5-20P	390 kg / 858 lbs	427 kg / 939 lbs	2110*890*2253 83 x 35 x 88 3/4
C-81FG-6D	Freezer 3 Doors & 6 Drawers	2050*810*2053 80 7/8 x 32 x 80 7/8	6	115/60/1	12	1400 / 1.9	5-20P	406 kg / 893 lbs	443 kg / 975 lbs	2110*890*2253 83 x 35 x 88 3/4



www.sub-equip.com

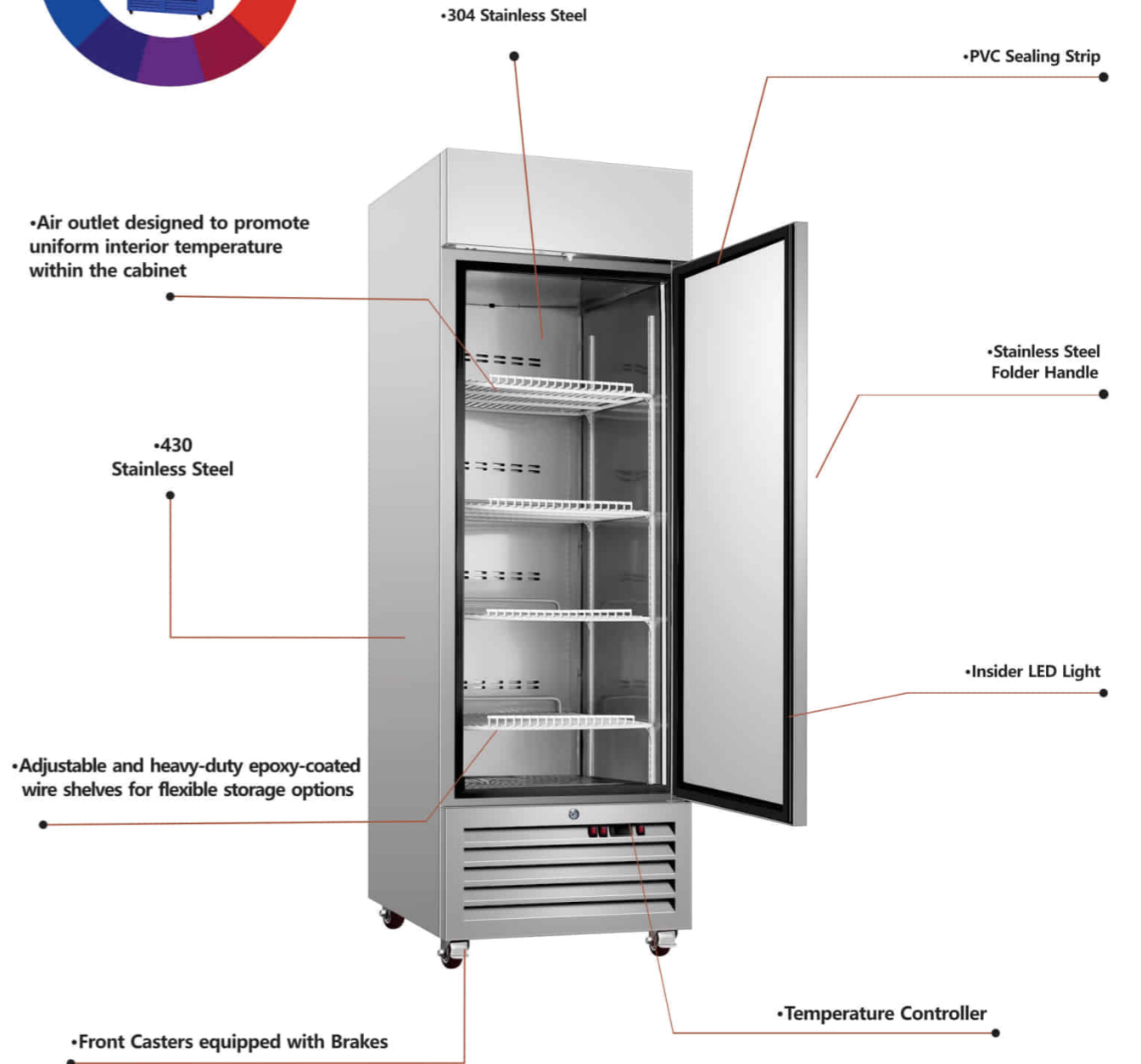
STAINLESS STEEL SOLID DOOR REACH-IN REFRIGERATION



www.sub-equip.com



POWDER COAT CUSTOM FINISHES



45°C / AMBIENT TEMPERATURE
HIGHEST TOLERABLE 113°F



Stainless Steel Solid Door Reach-In Refrigerator

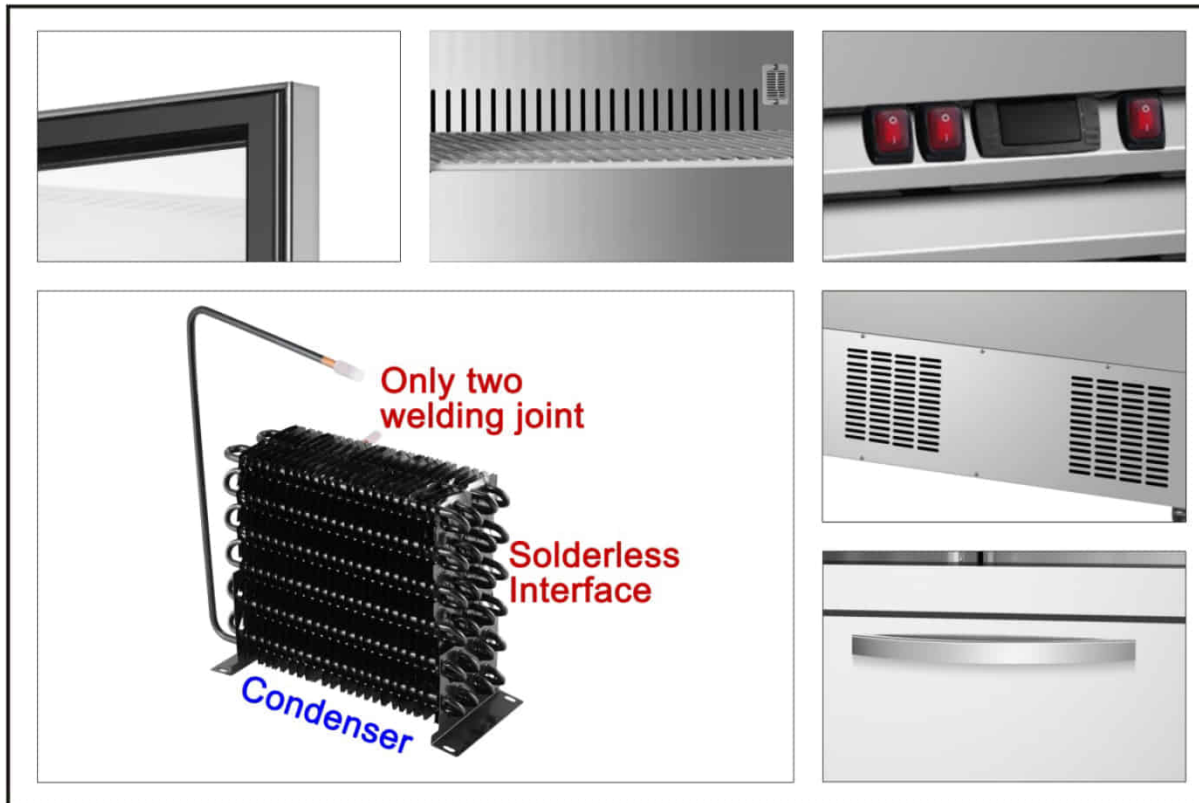
-Interior temperature range: 1°C to 4°C (33°F to 40°F)

Model	Doors	Exterior Dimensions (W x D x H) (mm/inch)	Shelves	Voltage (V/Hz/Ph)	Elite Series Amps	Power (W/HP)	NEMA PLUG	N.W	G.W	Packing Size (W x D x H) (mm/inch)
C-19BR	Refrigerator 1 Door	680*650*2053 26 3/4 x 25 5/8 x 80 7/8	4	115/60/1	5	500 / 0.68	5-15P	128 kg / 282 lbs	142 kg / 312 lbs	740*720*2253 29 1/4 x 28 1/3 x 88 3/4
C-27BR	Refrigerator 1 Door	680*830*2053 26 3/4 x 32 3/4 x 80 7/8	4	115/60/1	5	500 / 0.68	5-15P	132 kg / 290 lbs	153 kg / 337 lbs	740*890*2253 29 1/4 x 35 x 88 3/4
C-35BR	Refrigerator 2 Doors	1003*830*2053 39 1/2 x 32 3/4 x 80 7/8	8	115/60/1	6.5	650 / 0.88	5-15P	175 kg / 385 lbs	207 kg / 455 lbs	1063*890*2253 41 7/8 x 35 x 88 3/4
C-48BR	Refrigerator 2 Doors	1220*830*2053 48 x 32 3/4 x 80 7/8	8	115/60/1	7.5	800 / 1.09	5-15P	212 kg / 466 lbs	246 kg / 541 lbs	1280*890*2253 52 1/2 x 35 x 88 3/4
C-54BR	Refrigerator 2 Doors	1370*830*2053 54 x 32 3/4 x 80 7/8	8	115/60/1	7.5	800 / 1.09	5-15P	226 kg / 497 lbs	250 kg / 550 lbs	1430*890*2253 56 3/8 x 35 x 88 3/4
C-81BR	Refrigerator 3 Doors	2050*830*2053 80 7/8 x 32 3/4 x 80 7/8	12	115/60/1	8.5	900 / 1.22	5-15P	318 kg / 700 lbs	349 kg / 768 lbs	2110*890*2253 83 x 35 x 88 3/4

Stainless Steel Solid Door Reach-In Freezer

-Interior temperature range: -18°C to -22°C (0°F to -7°F)

Model	Doors	Exterior Dimensions (W x D x H) (mm/inch)	Shelves	Voltage (V/Hz/Ph)	Elite Series Amps	Power (W/HP)	NEMA PLUG	N.W	G.W	Packing Size (W x D x H) (mm/inch)
C-19BF	Freezer 1 Door	680*650*2053 26 3/4 x 25 5/8 x 80 7/8	4	115/60/1	5	500 / 0.68	5-15P	128 kg / 282 lbs	142 kg / 312 lbs	740*720*2253 29 1/4 x 28 1/3 x 88 3/4
C-27BF	Freezer 1 Door	680*830*2053 26 3/4 x 32 3/4 x 80 7/8	4	115/60/1	5	500 / 0.68	5-15P	132 kg / 290 lbs	153 kg / 337 lbs	740*890*2253 29 1/4 x 35 x 88 3/4
C-35BF	Freezer 2 Doors	1003*830*2053 39 1/2 x 32 3/4 x 80 7/8	8	115/60/1	6.5	650 / 0.88	5-15P	175 kg / 385 lbs	207 kg / 455 lbs	1063*890*2253 41 7/8 x 35 x 88 3/4
C-48BF	Freezer 2 Doors	1220*830*2053 48 x 32 3/4 x 80 7/8	8	115/60/1	7.5	800 / 1.08	5-15P	212 kg / 466 lbs	246 kg / 541 lbs	1280*890*2253 52 1/2 x 35 x 88 3/4
C-54BF	Freezer 2 Doors	1370*830*2053 54 x 32 3/4 x 80 7/8	8	115/60/1	7.5	800 / 1.08	5-15P	226 kg / 497 lbs	250 kg / 550 lbs	1430*890*2253 56 3/8 x 35 x 88 3/4
C-81BF	Freezer 3 Doors	2050*830*2053 80 7/8 x 32 3/4 x 80 7/8	12	115/60/1	12	1400 / 1.9	5-20P	318 kg / 700 lbs	349 kg / 768 lbs	2110*890*2253 83 x 35 x 88 3/4



Features

- CFC free refrigerant and foam insulation
- Electronic thermostat and digital LED temperature display for accurate control and easy reading
- Self-closing swing door
- Air outlet designed to promote uniform interior temperature within the cabinet
- The coated copper tube, boasting a sturdy 0.7mm thickness, ensures durability.
Crafted from a single bent tube, minimizing the risk of leaks with only two welding joints.
- The condenser is efficiently positioned inside the condensation pan to facilitate the evaporation of excess water.
- INTERIOR: 304 Stainless Steel
- EXTERIOR: 430 Stainless Steel
- Adjustable and heavy-duty epoxy-coated wire shelves for flexible storage options
- Easy to mount 4" casters (front casters with brakes) are standard with all units
- Electrical specifications: 115/60/1 with a NEMA 5-15P plug and a 10ft cord.
- Three-door freezer equipped with a 5-20P plug
- SGS & SGS Sanitation Certificate



www.sub-equip.com



Stainless Steel Solid Door Reach-In Refrigerator with Drawer

-Interior temperature range: 1°C to 4°C (33°F to 40°F)



Model	Doors & Drawers	Exterior Dimensions (W x D x H) (mm/inch)	Shelves	Voltage (V/Hz/Ph)	Elite Series Amps	Power (W/HP)	NEMA PLUG	N.W	G.W	Packing Size (W x D x H) (mm/inch)
C-19BR-1D	Refrigerator 1 Door & 1 Drawer	680*650*2053 26 3/4 x 25 5/8 x 80 7/8	3	115/60/1	5	500 / 0.68	5-15P	134 kg / 295 lbs	148 kg / 326 lbs	740*710*2253 29 1/4 x 28 x 88 3/4
C-19BR-2D	Refrigerator 1 Door & 2 Drawers	680*650*2053 26 3/4 x 25 5/8 x 80 7/8	2	115/60/1	5	500 / 0.68	5-15P	140 kg / 308 lbs	154 kg / 339 lbs	740*710*2253 29 1/4 x 28 x 88 3/4
C-27BR-1D	Refrigerator 1 Door & 1 Drawer	680*830*2053 26 3/4 x 32 3/4 x 80 7/8	3	115/60/1	5	500 / 0.68	5-15P	145 kg / 319 lbs	159 kg / 350 lbs	740*890*2253 29 1/4 x 35 x 88 3/4
C-27BR-2D	Refrigerator 1 Door & 2 Drawers	680*830*2053 26 3/4 x 32 3/4 x 80 7/8	2	115/60/1	5	500 / 0.68	5-15P	150 kg / 330 lbs	164 kg / 360 lbs	740*890*2253 29 1/4 x 35 x 88 3/4
C-35BR-2D C-35BR-2UD	Refrigerator 2 Doors & 2 Drawers	1003*830*2053 39 1/2 x 32 3/4 x 80 7/8	6	115/60/1	6.5	650 / 0.88	5-15P	187 kg / 411 lbs	219 kg / 482 lbs	1063*890*2253 41 7/8 x 35 x 88 3/4
C-35BR-4D	Refrigerator 2 Doors & 4 Drawers	1003*830*2053 39 1/2 x 32 3/4 x 80 7/8	4	115/60/1	6.5	650 / 0.88	5-15P	199 kg / 438 lbs	211 kg / 464 lbs	1063*890*2253 41 7/8 x 35 x 88 3/4
C-48BR-2D C-48BR-2UD	Refrigerator 2 Doors & 2 Drawers	1220*830*2053 48 x 32 3/4 x 80 7/8	6	115/60/1	7.5	800 / 1.09	5-15P	224 kg / 493 lbs	258 kg / 568 lbs	1280*890*2253 50 1/2 x 35 x 88 3/4
C-48BR-4D	Refrigerator 2 Doors & 4 Drawers	1220*830*2053 48 x 32 3/4 x 80 7/8	4	115/60/1	7.5	800 / 1.09	5-15P	236 kg / 519 lbs	270 kg / 594 lbs	1280*890*2253 50 1/2 x 35 x 88 3/4
C-54BR-2D C-54BR-2UD	Refrigerator 2 Doors & 2 Drawers	1370*830*2053 54 x 32 3/4 x 80 7/8	6	115/60/1	7.5	800 / 1.09	5-15P	238 kg / 524 lbs	263 kg / 578 lbs	1430*890*2253 56 3/8 x 35 x 88 3/4
C-54BR-4D	Refrigerator 2 Doors & 4 Drawers	1370*830*2053 54 x 32 3/4 x 80 7/8	4	115/60/1	7.5	800 / 1.09	5-15P	250 kg / 550 lbs	279 kg / 614 lbs	1430*890*2253 56 3/8 x 35 x 88 3/4
C-81BR-2D C-81BR-2UD	Refrigerator 3 Doors & 2 Drawers	2050*830*2053 80 7/8 x 32 3/4 x 80 7/8	10	115/60/1	8.5	900 / 1.22	5-15P	374 kg / 822 lbs	410 kg / 902 lbs	2110*890*2253 83 x 35 x 88 3/4
C-81BR-3D	Refrigerator 3 Doors & 3 Drawers	2050*830*2053 80 7/8 x 32 3/4 x 80 7/8	9	115/60/1	8.5	900 / 1.22	5-15P	382 kg / 840 lbs	418 kg / 919 lbs	2110*890*2253 83 x 35 x 88 3/4
C-81BR-4D	Refrigerator 3 Doors & 4 Drawers	2050*830*2053 80 7/8 x 32 3/4 x 80 7/8	8	115/60/1	8.5	900 / 1.22	5-15P	390 kg / 858 lbs	427 kg / 939 lbs	2110*890*2253 83 x 35 x 88 3/4
C-81BR-6D	Refrigerator 3 Doors & 6 Drawers	2050*830*2053 80 7/8 x 32 3/4 x 80 7/8	6	115/60/1	8.5	900 / 1.22	5-15P	406 kg / 893 lbs	443 kg / 975 lbs	2110*890*2253 83 x 35 x 88 3/4



www.sub-equip.com

Stainless Steel Solid Door Reach-In Freezer with Drawer

-Interior temperature range: -18°C to -22°C (0° F to -7°F)



Model	Doors & Drawers	Exterior Dimensions (W x D x H) (mm/inch)	Shelves	Voltage (V/Hz/Ph)	Elite Series Amps	Power (W/HP)	NEMA PLUG	N.W	G.W	Packing Size (W x D x H) (mm/inch)
C-19BF-1D	Freezer 1 Door & 1 Drawer	680*650*2053 26 3/4 x 25 5/8 x 80 7/8	3	115/60/1	5	500 / 0.68	5-15P	134 kg / 295 lbs	148 kg / 326 lbs	740*710*2253 29 1/4 x 28 x 88 3/4
C-19BF-2D	Freezer 1 Door & 2 Drawers	680*650*2053 26 3/4 x 25 5/8 x 80 7/9	2	115/60/1	5	500 / 0.68	5-15P	140 kg / 308 lbs	154 kg / 339 lbs	740*710*2253 29 1/4 x 28 x 88 3/4
C-27BF-1D	Freezer 1 Door & 1 Drawer	680*830*2053 26 3/4 x 32 3/4 x 80 7/8	3	115/60/1	5	500 / 0.68	5-15P	145 kg / 319 lbs	159 kg / 350 lbs	740*890*2253 29 1/4 x 35 x 88 3/4
C-27BF-2D	Freezer 1 Door & 2 Drawers	680*830*2053 26 3/4 x 32 3/4 x 80 7/8	2	115/60/1	5	500 / 0.68	5-15P	150 kg / 330 lbs	164 kg / 360 lbs	740*890*2253 29 1/4 x 35 x 88 3/4
C-35BF-2D C-35BF-2UD	Freezer 2 Doors & 2 Drawers	1003*830*2053 39 1/2 x 32 3/4 x 80 7/8	6	115/60/1	6.5	650 / 0.88	5-15P	187 kg / 411 lbs	219 kg / 482 lbs	1063*890*2253 41 7/8 x 35 x 88 3/4
C-35BF-4D	Freezer 2 Doors & 4 Drawers	1003*830*2053 39 1/2 x 32 3/4 x 80 7/8	4	115/60/1	6.5	650 / 0.88	5-15P	199 kg / 438 lbs	211 kg / 464 lbs	1063*890*2253 41 7/8 x 35 x 88 3/4
C-48BF-2D C-48BF-2UD	Freezer 2 Doors & 2 Drawers	1220*830*2053 48 x 32 3/4 x 80 7/8	4	115/60/1	7.5	800 / 1.08	5-15P	224 kg / 493 lbs	258 kg / 568 lbs	1280*890*2253 50 1/2 x 35 x 88 3/4
C-48BF-4D	Freezer 2 Doors & 4 Drawers	1220*830*2053 48 x 32 3/4 x 80 7/8	4	115/60/1	7.5	800 / 1.08	5-15P	236 kg / 519 lbs	270 kg / 594 lbs	1280*890*2253 50 1/2 x 35 x 88 3/4
C-54BF-2D C-54BF-2UD	Freezer 2 Doors & 2 Drawers	1370*830*2053 54 x 32 3/4 x 80 7/8	6	115/60/1	7.5	800 / 1.08	5-15P	238 kg / 524 lbs	263 kg / 578 lbs	1430*890*2253 56 3/8 x 35 x 88 3/4
C-54BF-4D	Freezer 2 Doors & 4 Drawers	1370*830*2053 54 x 32 3/4 x 80 7/8	4	115/60/1	7.5	800 / 1.08	5-15P	250 kg / 550 lbs	279 kg / 614 lbs	1430*890*2253 56 3/8 x 35 x 88 3/4
C-81BF-2D C-81BF-2UD	Freezer 3 Doors & 2 Drawers	2050*830*2053 80 7/8 x 32 3/4 x 80 7/8	10	115/60/1	12	1400 / 1.9	5-20P	374 kg / 822 lbs	410 kg / 902 lbs	2110*890*2253 83 x 35 x 88 3/4
C-81BF-3D	Freezer 3 Doors & 3 Drawers	2050*830*2053 80 7/8 x 32 3/4 x 80 7/8	9	115/60/1	12	1400 / 1.9	5-20P	382 kg / 840 lbs	418 kg / 919 lbs	2110*890*2253 83 x 35 x 88 3/4
C-81BF-4D	Freezer 3 Doors & 4 Drawers	2050*830*2053 80 7/8 x 32 3/4 x 80 7/8	8	115/60/1	12	1400 / 1.9	5-20P	390 kg / 858 lbs	427 kg / 939 lbs	2110*890*2253 83 x 35 x 88 3/4
C-81BF-6D	Freezer 3 Doors & 6 Drawers	2050*830*2053 80 7/8 x 32 3/4 x 80 7/8	6	115/60/1	12	1400 / 1.9	5-20P	406 kg / 893 lbs	443 kg / 975 lbs	2110*890*2253 83 x 35 x 88 3/4



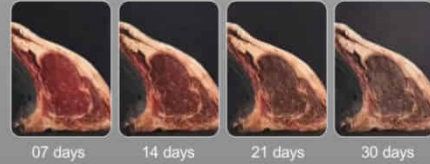
www.sub-equip.com

POWDER COAT CUSTOM FINISHES



DRY AGING REFRIGERATOR

WHAT HAPPENS WHEN YOU DRY AGE BEEF FOR 30 DAYS?



For those who appreciate the good meat a sicao dry aging fridge is absolutely awesome. After waiting for 1 week or several months, the dry aging meat can produce an extraordinary tender and intense flavour



www.sub-equip.com



Features

- This high volume dry aging cabinet can hold up to 200lbs of product each cabinet.
- Equipped with a compressor fan cooling system & air purification.
- Energy efficient low-e triple pane glass doors
- UV sterilization lamp reduce bacterial
- Auto defrosting and auto evaporation to prevent condensation .
- Inset LED light to improve products visibility and display
- Interior construed with 304 stainless steel
- Exterior construed with 430 stainless steel
- Electronic thermostat and digital LED temperature display for accurate control and easy reading
- Humidity range:50~80%
- Humidification method: fan +water box
- Temperature : 36 to 57°F /2 to 14°C
- Electrical: 115V/60Hz/1Ph with NEMA 5-15P plug, 10ft cord
- SGS & SGS Sanitation Certificate

Model	Doors & Drawers	Exterior Dimensions (W x D x H) (mm/inch)	Shelves	Voltage (V/Hz/Ph)	Elite Series Amps	Power (W/HP)	NEMA PLUG	N.W	G.W	Packing Size (W x D x H) (mm/inch)
C-27RGN	Refrigerator 1 Glass Door	680*810*2053 26 3/4 x 32 x 80 7/8	4	115/60/1	6.5	650 / 0.88	5-15P	163 kg / 359 lbs	183 kg / 403 lbs	740*710*2253 29 1/4 x 28 x 88 3/4
C-54RGN	Refrigerator 2 Glass Doors	1370*810*2053 54 x 32 x80 7/8	8	115/60/1	7.5	800 / 1.08	5-15P	272 kg / 598 lbs	306 kg / 673 lbs	1430*890*2253 56 3/8 x 35 x 88 3/4



www.sub-equip.com

BLAST CHILLER / FREEZER

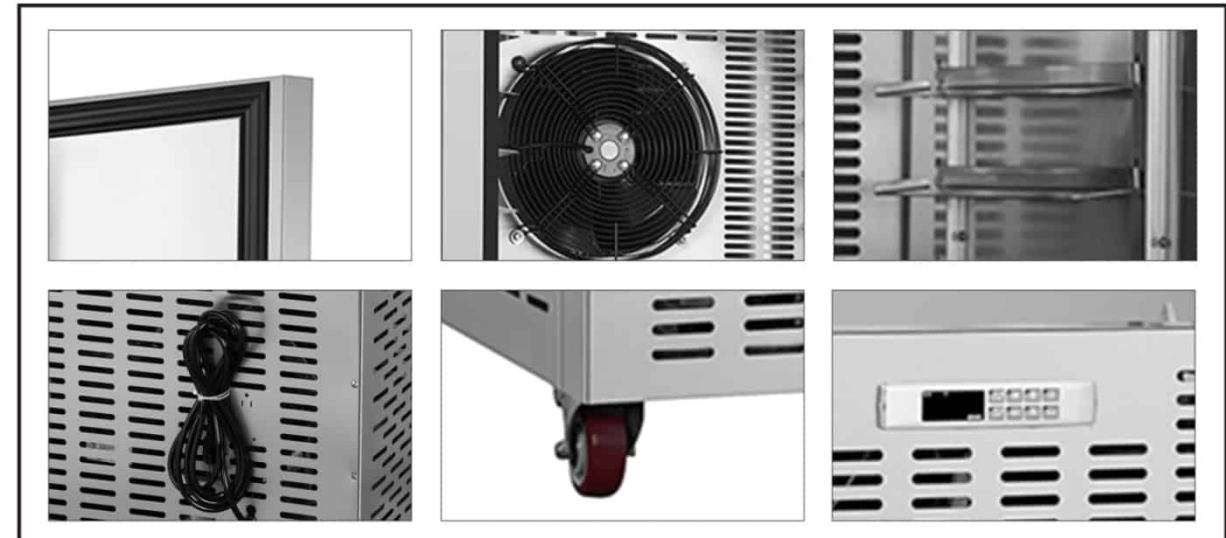


Model	Doors	Exterior Dimensions (W x D x H) (mm/inch)	Full size Sheet Pans (Not Include)	Voltage (V/Hz/Ph)	Elite Series Amps	Power (W/HP)	NEMA PLUG	N.W	G.W	Packing Size (W x D x H) (mm/inch)
CBF-5	Blast Chiller / Freezer 1 Door	838*920*1205 33 x 36 1/4 x 47 1/2	5	115/60/1	14	1600 / 2.2	5-20P	115 kg / 253 lbs	135 kg / 299 lbs	898*980*1255 35 1/2 x 38 3/4 x 49 1/2
CBF-10	Blast Chiller / Freezer 1 Door	838*920*1595 33 x 36 1/4 x 62 3/4	10	208/60/1	24	2800 / 3.8	None	155 kg / 341 lbs	185 kg / 407 lbs	898*980*1645 35 1/2 x 38 3/4 x 65



www.sub-equip.com

45°C AMBIENT TEMPERATURE
HIGHEST TOLERABLE **113°F**



Blast Chillers +70°C To +3°C (158°F to 37.4°F)
The Blast Chilling Cycle, The Product Temperature Drops From +70°C To +3°C (158°F to 37.4°F) In 90 Minutes The Transition Between +65°C And +10°C (149°F and 50°F) Ideal Climate For the Proliferation Of Bacterial, So Fast As To Prevent Any Generation. The Foodstuff Can Be Kept For 8 Days In Normally Chiller.



Shock Freezers +70°C To -18°C(158°F to 0°F)
The Maximum Storage Is Achieved Through The Rapid Production Of Cold To Allow The Production Of Microcrystals That Optimally Preserve The Cells Of The Foodstuff. The Shock Freezing Drops The Temperature From +70°C To -18°C (158°F to 0°F) In A Maximum Time Of 240 Minutes The Food Is Quickly Frozen And Then Be Kept For Months In Normally Freezer.

Features

- CFC Refrigerant and Foam
- Ventilated Refrigeration Compartment.
- Danfoss Refrigeration Components.
- Aspera Or Danfoss Compressor.
- Up to -40°C (-40°F)
- Exterior: Fully constructed with durable 430 Stainless Steel
- Internal: 304 Stainless Steel 304 With Round Internal Edges For Easy Cleaning
- Models are available to accommodate either 5 or 10 full-size sheet pans (18"x 26")
- Self-Closing Doors with Easy to Clean
- Replace Magnetic Gasket.
- Precise Temperature Control: Mention the temperature range and its ability to maintain stable freezing conditions.
- 75mm thickness Insulation for Excellent Thermal Efficiency.
- Dixell Controller
- Electric Door Mullion Heater Replaceable
- SGS & SGS Sanitation Certificate.



www.sub-equip.com

CHEF BASE



Features

- CFC free refrigerant and foam insulation.
- Equipped with an electronic thermostat and digital LED temperature display for precise control and convenient reading.
- External construction comprises stainless steel framework.
- Internally constructed with 304 stainless steel.
- Incorporates auto defrosting and auto evaporation mechanisms to prevent condensation.
- The coated copper tube, boasting a sturdy 0.7mm thickness, ensures durability.
- Crafted from a single bent tube, minimizing the risk of leaks with only two welding joints.
- The condenser is efficiently positioned inside the condensation pan to facilitate the evaporation of excess water.
- Comes with easy-to-mount 4" casters (front casters equipped with brakes), standard with all units.
- Interior temperature range: 1°C to 4°C (33°F to 40°F)
- Electrical specifications: 115/60/1 with a NEMA 5-15P plug and a 10ft cord.
- SGS & SGS Sanitation Certificate



www.sub-equip.com

45°C AMBIENT
HIGHEST TEMPERATURE
TOLERABLE 113°F



Model	Drawers	Exterior Dimensions (W x D x H) (mm/inch)	Voltage (V/Hz/Ph)	Elite Series Amps	Power (W/HP)	NEMA PLUG	N.W	G.W	Packing Size (W x D x H) (mm/inch)
CCB-36-2D	Refrigerator 2 Drawers	965.2*800*572 38 x 31 1/2 x 22 1/2	115/60/1	3	300 / 0.41	5-15P	95 kg / 210 lbs	125 kg / 276 lbs	1037*945*772 40 5/8 x 37 1/2 x 30 1/2
CCB-48-2D	Refrigerator 2 Drawers	1270*800*572 50 x 31 1/2 x 22 1/2	115/60/1	5	500 / 0.68	5-15P	115 kg / 254 lbs	155 kg / 342 lbs	1341*945*772 52 5/8 x 37 1/2 x 30 1/2
CCB-60-4D	Refrigerator 4 Drawers	1574.5*800*572 62 x 31 1/2 x 22 1/2	115/60/1	6.5	650 / 0.88	5-15P	135 kg / 298 lbs	180 kg / 397 lbs	1645*945*772 64 5/8 x 37 1/2 x 30 1/2
CCB-72-4D	Refrigerator 4 Drawers	1879.6*800*572 74 x 31 1/2 x 22 1/2	115/60/1	6.5	650 / 0.88	5-15P	150 kg / 331 lbs	200 kg / 441 lbs	1949*945*772 76 5/8 x 37 1/2 x 30 1/2
CCB-84-6D	Refrigerator 6 Drawers	2184.4*800*572 86 x 31 1/2 x 22 1/2	115/60/1	7.5	800 / 1.08	5-15P	180 kg / 397 lbs	230 kg / 507 lbs	2253*945*772 88 5/8 x 37 1/2 x 30 1/2
CCB-96-6D	Refrigerator 6 Drawers	2489.2*800*572 98 x 31 1/2 x 22 1/2	115/60/1	7.5	800 / 1.08	5-15P	200 kg / 441 lbs	260 kg / 574 lbs	2557*945*772 100 5/8 x 37 1/2 x 30 1/2



www.sub-equip.com

POWDER COAT CUSTOM FINISHES

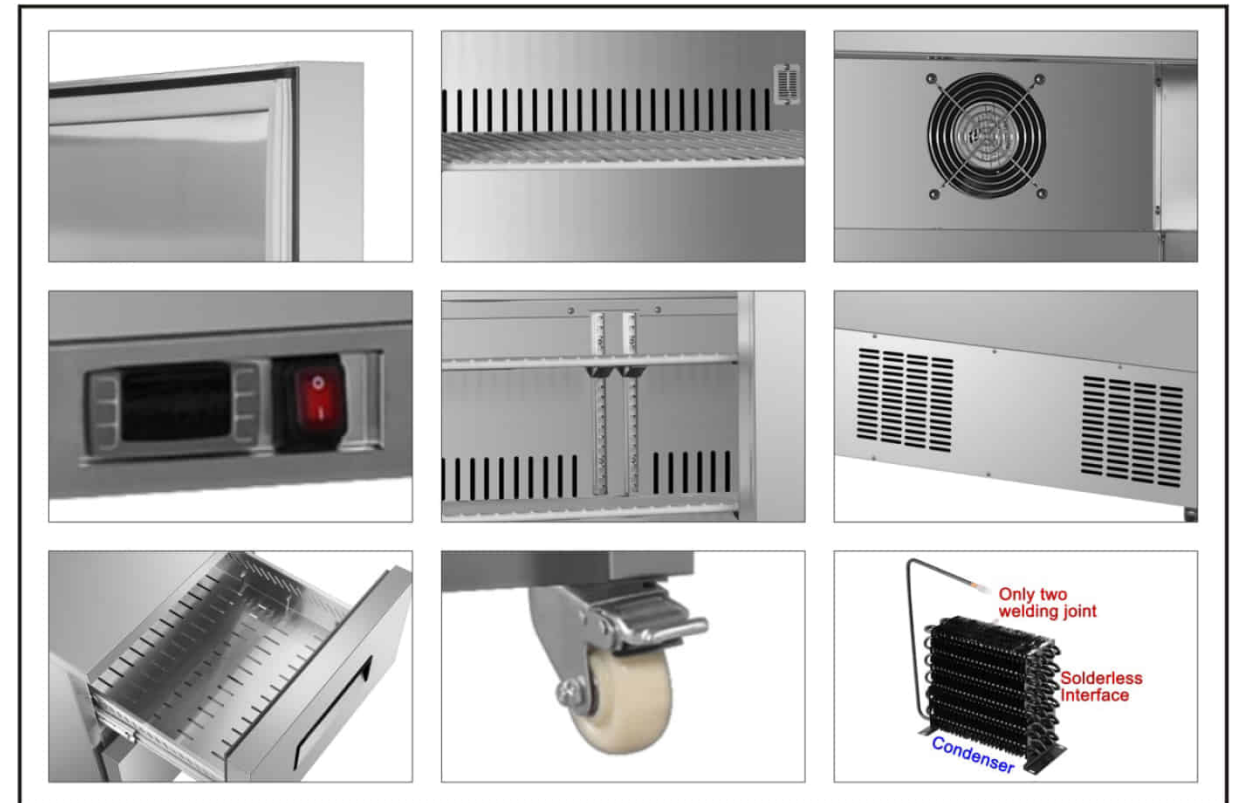


UNDERCOUNTER REFRIGERATION



www.sub-equip.com

45°C AMBIENT TEMPERATURE HIGHEST TOLERABLE 113°F



Features

- CFC free refrigerant and foam insulation
- Electronic thermostat and digital LED temperature display for accurate control and easy reading
- Self-closing swing door
- Air outlet designed to promote uniform interior temperature within the cabinet
- The coated copper tube, boasting a sturdy 0.7mm thickness, ensures durability. Crafted from a single bent tube, minimizing the risk of leaks with only two welding joints.
- The condenser is efficiently positioned inside the condensation pan to facilitate the evaporation of excess water.
- INTERIOR: 304 Stainless Steel
- EXTERIOR: 430 Stainless Steel
- Adjustable and heavy-duty epoxy-coated wire shelves for flexible storage options
- Easy to mount 4" casters (front casters with brakes) are standard with all units
- Highest Ambient Temperature: 45°C/113°F
- Electrical specifications: 115/60/1 with a NEMA 5-15P plug and a 10ft cord. ♻️
- SGS & SGS Sanitation Certificate



www.sub-equip.com



Undercounter Refrigerator

-Interior temperature range: 1°C to 4°C (33°F to 40°F)



Model	Doors	Exterior Dimensions (W x D x H) (mm/inch)	Shelves	Voltage (V/Hz/Ph)	Elite Series Amps	Power (W/HP)	NEMA PLUG	N.W	G.W	Packing Size (W x D x H) (mm/inch)
CUC-27	Refrigerator 1 Door	705*760*905 27 3/4 x 30 x 35 5/8	2	115/60/1	3	300 / 0.41	5-15P	64 kg / 141 lbs	88 kg / 194 lbs	816*855*990 32 1/8 x 33 3/4 x 39
CUC-29	Refrigerator 1 Door	734*760*905 29 x 30 x 35 5/8	2	115/60/1	3	300 / 0.41	5-15P	66 kg / 146 lbs	91 kg / 200 lbs	846*855*990 33 3/8 x 33 3/4 x 39
CUC-36	Refrigerator 2 Doors	920*760*905 36 1/4 x 30 x 35 5/8	4	115/60/1	3	300 / 0.41	5-15P	70.5 kg / 156 lbs	96 kg / 211 lbs	1001*855*990 39 1/2 x 33 3/4 x 39
CUC-48	Refrigerator 2 Doors	1225*760*905 48 1/4 x 30 x 35 5/8	4	115/60/1	4	400 / 0.54	5-15P	85.5 kg / 188 lbs	129 kg / 284 lbs	1306*855*990 51 1/2 x 33 3/4 x 39
CUC-60	Refrigerator 2 Doors	1524*760*905 60 x 30 x 35 5/8	4	115/60/1	4	400 / 0.54	5-15P	108 kg / 238 lbs	152 kg / 334 lbs	1636*855*990 64 1/2 x 33 3/4 x 39
CUC-72	Refrigerator 3 Doors	1822*760*905 71 3/4 x 30 x 35 5/8	6	115/60/1	4.5	450 / 0.61	5-15P	135 kg / 297 lbs	180 kg / 396 lbs	1904*855*990 75 x 33 3/4 x 39

Undercounter Freezer

-Interior temperature range: -18°C to -22°C (0°F to -7°F)

Model	Doors	Exterior Dimensions (W x D x H) (mm/inch)	Shelves	Voltage (V/Hz/Ph)	Elite Series Amps	Power (W/HP)	NEMA PLUG	N.W	G.W	Packing Size (W x D x H) (mm/inch)
CUC-27F	Freezer 1 Door	705*760*905 27 3/4 x 30 x 35 5/8	2	115/60/1	3	300 / 0.41	5-15P	64 kg / 141 lbs	88 kg / 194 lbs	816*855*990 32 1/8 x 33 3/4 x 39
CUC-29F	Freezer 1 Door	734*760*905 29 x 30 x 35 5/8	2	115/60/1	3	300 / 0.41	5-15P	66 kg / 146 lbs	91 kg / 200 lbs	846*855*990 33 3/8 x 33 3/4 x 39
CUC-36F	Freezer 2 Doors	920*760*905 36 1/4 x 30 x 35 5/8	4	115/60/1	3	300 / 0.41	5-15P	70.5 kg / 156 lbs	96 kg / 211 lbs	1001*855*990 39 1/2 x 33 3/4 x 39
CUC-48F	Freezer 2 Doors	1225*760*905 48 1/4 x 30 x 35 5/8	4	115/60/1	4	400 / 0.54	5-15P	85.5 kg / 188 lbs	129 kg / 284 lbs	1306*855*990 51 1/2 x 33 3/4 x 39
CUC-60F	Freezer 2 Doors	1524*760*905 60 x 30 x 35 5/8	4	115/60/1	5.5	550 / 0.74	5-15P	108 kg / 238 lbs	152 kg / 334 lbs	1636*855*990 64 1/2 x 33 3/4 x 39
CUC-72F	Freezer 3 Doors	1822*760*905 71 3/4 x 30 x 35 5/8	6	115/60/1	5.5	550 / 0.74	5-15P	135 kg / 297 lbs	180 kg / 396 lbs	1904*855*990 75 x 33 3/4 x 39



www.sub-equip.com

Undercounter Refrigerator with Drawer

-Interior temperature range: 1°C to 4°C (33°F to 40°F)



Model	Doors & Drawers	Exterior Dimensions (W x D x H) (mm/inch)	Shelves	Voltage (V/Hz/Ph)	Elite Series Amps	Power (W/HP)	NEMA PLUG	N.W	G.W	Packing Size (W x D x H) (mm/inch)
CUC-27-2D	Refrigerator 2 Drawers	705*760*905 27 3/4 x 30 x 35 5/8	0	115/60/1	3	300 / 0.41	5-15P	74 kg / 163 lbs	105 kg / 232 lbs	816*855*990 32 1/8 x 33 3/4 x 39
CUC-29-2D	Refrigerator 2 Drawers	734*760*905 29 x 30 x 35 5/8	0	115/60/1	3	300 / 0.41	5-15P	76 kg / 168 lbs	107 kg / 236 lbs	846*855*990 33 3/8 x 33 3/4 x 39
CUC-36-2D	Refrigerator 1 Door & 2 Drawers	920*760*905 36 1/4 x 30 x 35 5/8	2	115/60/1	3	300 / 0.41	5-15P	87 kg / 192 lbs	119 kg / 263 lbs	1001*855*990 39 1/2 x 33 3/4 x 39
CUC-36-4D	Refrigerator 4 Drawers	920*760*905 36 1/4 x 30 x 35 5/8	0	115/60/1	3	300 / 0.41	5-15P	102 kg / 225 lbs	134 kg / 296 lbs	1001*855*990 39 1/2 x 33 3/4 x 39
CUC-48-2D	Refrigerator 1 Door & 2 Drawers	1225*760*905 48 1/4 x 30 x 35 5/8	2	115/60/1	4	400 / 0.54	5-15P	108 kg / 238 lbs	146 kg / 321 lbs	1306*855*990 51 1/2 x 33 3/4 x 39
CUC-48-4D	Refrigerator 4 Drawers	1225*760*905 48 1/4 x 30 x 35 5/8	0	115/60/1	4	400 / 0.54	5-15P	115 kg / 253 lbs	151 kg / 332 lbs	1306*855*990 51 1/2 x 33 3/4 x 39
CUC-60-2D	Refrigerator 1 Door & 2 Drawers	1524*760*905 60 x 30 x 35 5/8	2	115/60/1	4	400 / 0.54	5-15P	129 kg / 284 lbs	174 kg / 383 lbs	1636*855*990 64 1/2 x 33 3/4 x 39
CUC-60-4D	Refrigerator 4 Drawers	1524*760*905 60 x 30 x 35 5/8	0	115/60/1	4	400 / 0.54	5-15P	135 kg / 297 lbs	180 kg / 396 lbs	1636*855*990 64 1/2 x 33 3/4 x 39
CUC-72-2D	Refrigerator 2 Doors & 2 Drawers	1822*760*905 71 3/4 x 30 x 35 5/8	4	115/60/1	4.5	450 / 0.61	5-15P	143 kg / 315 lbs	188 kg / 414 lbs	1904*855*990 75 x 33 3/4 x 39
CUC-72-4D	Refrigerator 1 Door & 4 Drawers	1822*760*905 71 3/4 x 30 x 35 5/8	2	115/60/1	4.5	450 / 0.61	5-15P	153 kg / 336 lbs	198 kg / 435 lbs	1904*855*990 75 x 33 3/4 x 39
CUC-72-6D	Refrigerator 6 Drawers	1822*760*905 71 3/4 x 30 x 35 5/8	0	115/60/1	4.5	450 / 0.61	5-15P	163 kg / 358 lbs	208 kg / 457 lbs	1904*855*990 75 x 33 3/4 x 39



www.sub-equip.com

45°C AMBIENT TEMPERATURE
HIGHEST TOLERABLE 113°F

Undercounter Freezer with Drawer

-Interior temperature range: -18°C to -22°C (0°F to -7°F)



Model	Doors & Drawers	Exterior Dimensions (W x D x H) (mm/inch)	Shelves	Voltage (V/Hz/Ph)	Elite Series Amps	Power (W/HP)	NEMA PLUG	N.W	G.W	Packing Size (W x D x H) (mm/inch)
CUC-27F-2D	Freezer 2 Drawers	705*760*905 27 3/4 x 30 x 35 5/8	0	115/60/1	3	300 / 0.4	5-15P	74 kg / 163 lbs	105 kg / 232 lbs	816*855*990 32 1/8 x 33 3/4 x 39
CUC-29F-2D	Freezer 2 Drawers	734*760*905 29 x 30 x 35 5/8	0	115/60/1	3	300 / 0.4	5-15P	76 kg / 168 lbs	107 kg / 236 lbs	846*855*990 33 3/8 x 33 3/4 x 39
CUC-36F-2D	Freezer 1 Door & 2 Drawers	920*760*905 36 1/4 x 30 x 35 5/8	2	115/60/1	3	300 / 0.4	5-15P	87 kg / 192 lbs	119 kg / 263 lbs	1001*855*990 39 1/2 x 33 3/4 x 39
CUC-36F-4D	Freezer 4 Drawers	920*760*905 36 1/4 x 30 x 35 5/8	0	115/60/1	3	300 / 0.4	5-15P	102 kg / 225 lbs	134 kg / 296 lbs	1001*855*990 39 1/2 x 33 3/4 x 39
CUC-48F-2D	Freezer 1 Door & 2 Drawers	1225*760*905 48 1/4 x 30 x 35 5/8	2	115/60/1	4	400 / 0.54	5-15P	108 kg / 238 lbs	146 kg / 321 lbs	1306*855*990 51 1/2 x 33 3/4 x 39
CUC-48F-4D	Freezer 4 Drawers	1225*760*905 48 1/4 x 30 x 35 5/8	0	115/60/1	4	400 / 0.54	5-15P	115 kg / 253 lbs	151 kg / 332 lbs	1306*855*990 51 1/2 x 33 3/4 x 39
CUC-60F-2D	Freezer 1 Door & 2 Drawers	1524*760*905 60 x 30 x 35 5/8	2	115/60/1	5.5	550 / 0.74	5-15P	129 kg / 284 lbs	174 kg / 383 lbs	1636*855*990 64 1/2 x 33 3/4 x 39
CUC-60F-4D	Freezer 4 Drawers	1524*760*905 60 x 30 x 35 5/8	0	115/60/1	5.5	550 / 0.74	5-15P	135 kg / 297 lbs	180 kg / 396 lbs	1636*855*990 64 1/2 x 33 3/4 x 39
CUC-72F-2D	Freezer 2 Doors & 2 Drawers	1822*760*905 71 3/4 x 30 x 35 5/8	4	115/60/1	5.5	550 / 0.74	5-15P	143 kg / 315 lbs	188 kg / 414 lbs	1904*855*990 75 x 33 3/4 x 39
CUC-72F-4D	Freezer 1 Door & 4 Drawers	1822*760*905 71 3/4 x 30 x 35 5/8	2	115/60/1	5.5	550 / 0.74	5-15P	153 kg / 336 lbs	198 kg / 435 lbs	1904*855*990 75 x 33 3/4 x 39
CUC-72F-6D	Freezer 6 Drawers	1822*760*905 71 3/4 x 30 x 35 5/8	0	115/60/1	5.5	550 / 0.74	5-15P	163 kg / 358 lbs	208 kg / 457 lbs	1904*855*990 75 x 33 3/4 x 39



www.sub-equip.com

UNDERCOUNTER REFRIGERATION WITH SIDE COMPRESSOR



45°C AMBIENT TEMPERATURE
HIGHEST TOLERABLE 113°F



POWDER COAT CUSTOM FINISHES





Undercounter Refrigerator with Side Compressor

-Interior temperature range: 1°C to 4°C (33°F to 40°F)

Model	Doors	Exterior Dimensions (W x D x H) (mm/inch)	Shelves	Voltage (V/Hz/Ph)	Elite Series Amps	Power (W/HP)	NEMA PLUG	N.W	G.W	Packing Size (W x D x H) (mm/inch)
CUSC-48	Refrigerator 1 Door	1220*800*905 48 x 31 1/2 x 35 5/8	2	115/60/1	34	400 / 0.54	5-15P	85 kg / 188 lbs	128 kg / 283 lbs	1304*895*995 51 3/8 x 35 1/4 x 39 1/4
CUSC-60	Refrigerator 2 Doors	1524*800*905 60 x 31 1/2 x 35 5/8	4	115/60/1	4	400 / 0.54	5-15P	110 kg / 243 lbs	154 kg / 340 lbs	1614*895*995 63 1/2 x 35 1/4 x 39 1/4
CUSC-72	Refrigerator 2 Doors	1828*800*905 72 x 31 1/2 x 35 5/8	4	115/60/1	4.5	450 / 0.6	5-15P	135 kg / 297 lbs	185 kg / 407 lbs	1915*895*995 75 1/2 x 35 1/4 x 39 1/4
CUSC-84	Refrigerator 3 Doors	2134*800*905 84 x 31 1/2 x 35 5/8	6	115/60/1	5.5	550 / 0.74	5-15P	143 kg / 315 lbs	209 kg / 460 lbs	2224*895*995 87 1/2 x 35 1/4 x 39 1/4
CUSC-96	Refrigerator 3 Doors	2438*800*905 96 x 31 1/2 x 35 5/8	6	115/60/1	6	600 / 0.81	5-15P	165 kg / 363 lbs	225 kg / 495 lbs	2528*895*995 99 1/2 x 35 1/4 x 39 1/4

Undercounter Freezer with Side Compressor

-Interior temperature range: -18°C to -22°C (0°F to -7°F)

Model	Doors	Exterior Dimensions (W x D x H) (mm/inch)	Shelves	Voltage (V/Hz/Ph)	Elite Series Amps	Power (W/HP)	NEMA PLUG	N.W	G.W	Packing Size (W x D x H) (mm/inch)
CUSC-48F	Freezer 1 Door	1220*800*905 48 x 31 1/2 x 35 5/8	2	115/60/1	4	400 / 0.54	5-15P	85 kg / 188 lbs	128 kg / 283 lbs	1304*895*995 51 3/8 x 35 1/4 x 39 1/4
CUSC-60F	Freezer 2 Door	1524*800*905 60 x 31 1/2 x 35 5/8	4	115/60/1	4.5	450 / 0.6	5-15P	110 kg / 243 lbs	154 kg / 340 lbs	1614*895*995 63 1/2 x 35 1/4 x 39 1/4
CUSC-72F	Freezer 2 Doors	1828*800*905 72 x 31 1/2 x 35 5/8	4	115/60/1	5.5	550 / 0.74	5-15P	135 kg / 297 lbs	185 kg / 407 lbs	1915*895*995 75 1/2 x 35 1/4 x 39 1/4
CUSC-84F	Freezer 3 Doors	2134*800*905 84 x 31 1/2 x 35 5/8	6	115/60/1	7	700 / 0.95	5-15P	143 kg / 315 lbs	209 kg / 460 lbs	2224*895*995 87 1/2 x 35 1/4 x 39 1/4
CUSC-96F	Freezer 3 Doors	2438*800*905 96 x 31 1/2 x 35 5/8	6	115/60/1	7.5	800 / 1.08	5-15P	165 kg / 363 lbs	225 kg / 495 lbs	2528*895*995 99 1/2 x 35 1/4 x 39 1/4



Features

- CFC free refrigerant and foam insulation
- Electronic thermostat and digital LED temperature display for accurate control and easy reading
- Self-closing swing door
- Air outlet designed to promote uniform interior temperature within the cabinet
- The coated copper tube, boasting a sturdy 0.7mm thickness, ensures durability. Crafted from a single bent tube, minimizing the risk of leaks with only two welding joints.
- The condenser is efficiently positioned inside the condensation pan to facilitate the evaporation of excess water.
- INTERIOR: 304 Stainless Steel
- EXTERIOR: 430 Stainless Steel
- Adjustable and heavy-duty epoxy-coated wire shelves for flexible storage options
- Easy to mount 4" casters (front casters with brakes) are standard with all units
- Ambient temperature up to 45°C(113°F)
- Electrical specifications: 115/60/1 with a NEMA 5-15P plug and a 10ft cord. Ⓢ
- SGS & SGS Sanitation Certificate



www.sub-equip.com



Undercounter Refrigerator with Side Compressor & Drawer

-Interior temperature range: 1°C to 4°C (33°F to 40°F)



Model	Doors & Drawers	Exterior Dimensions (W x D x H) (mm/inch)	Shelves	Voltage (V/Hz/Ph)	Elite Series Amps	Power (W/HP)	NEMA PLUG	N.W	G.W	Packing Size (W x D x H) (mm/inch)
CUSC-48-2D	Refrigerator 2 Drawers	1220*800*905 48 x 31 1/2 x 35 5/8	0	115/60/1	4	400 / 0.54	5-15P	88 kg / 194 lbs	131 kg / 289 lbs	1304*895*995 51 3/8 x 35 1/4 x 39 1/4
CUSC-60-2D	Refrigerator 1 Door & 2 Drawers	1524*800*905 60 x 31 1/2 x 35 5/8	2	115/60/1	4.5	450 / 0.61	5-15P	125 kg / 275 lbs	169 kg / 372 lbs	1614*895*995 63 1/2 x 35 1/4 x 39 1/4
CUSC-60-4D	Refrigerator 4 Drawers	1524*800*905 60 x 31 1/2 x 35 5/8	0	115/60/1	4.5	450 / 0.61	5-15P	140 kg / 308 lbs	184 kg / 405 lbs	1614*895*995 63 1/2 x 35 1/4 x 39 1/4
CUSC-72-2D	Refrigerator 1 Door & 2 Drawers	1828*800*905 72 x 31 1/2 x 35 5/8	2	115/60/1	5	500 / 0.68	5-15P	145 kg / 319 lbs	190 kg / 418 lbs	1915*895*995 75 1/2 x 35 1/4 x 39 1/4
CUSC-72-4D	Refrigerator 4 Drawers	1828*800*905 72 x 31 1/2 x 35 5/8	0	115/60/1	5	500 / 0.68	5-15P	155 kg / 341 lbs	200 kg / 440 lbs	1915*895*995 75 1/2 x 35 1/4 x 39 1/4
CUSC-84-2D	Refrigerator 2 Doors & 2 Drawers	2134*800*905 84 x 31 1/2 x 35 5/8	4	115/60/1	5.5	550 / 0.74	5-15P	153 kg / 337 lbs	219 kg / 482 lbs	2224*895*995 87 1/2 x 35 1/4 x 39 1/4
CUSC-84-4D	Refrigerator 1 Door & 4 Drawers	2134*800*905 84 x 31 1/2 x 35 5/8	2	115/60/1	5.5	550 / 0.74	5-15P	163 kg / 358 lbs	229 kg / 504 lbs	2224*895*995 87 1/2 x 35 1/4 x 39 1/4
CUSC-84-6D	Refrigerator 6 Drawers	2134*800*905 84 x 31 1/2 x 35 5/8	0	115/60/1	5.5	550 / 0.74	5-15P	173 kg / 380 lbs	239 kg / 526 lbs	2224*895*995 87 1/2 x 35 1/4 x 39 1/4
CUSC-96-2D	Refrigerator 2 Doors & 2 Drawers	2438*800*905 96 x 31 1/2 x 35 5/8	4	115/60/1	6	600 / 0.81	5-15P	175 kg / 385 lbs	235 kg / 517 lbs	2528*895*995 99 1/2 x 35 1/4 x 39 1/4
CUSC-96-4D	Refrigerator 1 Door & 4 Drawers	2438*800*905 96 x 31 1/2 x 35 5/8	2	115/60/1	6	600 / 0.81	5-15P	185 kg / 407 lbs	245 kg / 539 lbs	2528*895*995 99 1/2 x 35 1/4 x 39 1/4
CUSC-96-6D	Refrigerator 6 Drawers	2438*800*905 96 x 31 1/2 x 35 5/8	0	115/60/1	6	600 / 0.81	5-15P	195 kg / 429 lbs	250 kg / 550 lbs	2528*895*995 99 1/2 x 35 1/4 x 39 1/4



www.sub-equip.com

Undercounter Freezer with Side Compressor & Drawer

-Interior temperature range: -18°C to -22°C (0°F to -7°F)



Model	Doors & Drawers	Exterior Dimensions (W x D x H) (mm/inch)	Shelves	Voltage (V/Hz/Ph)	Elite Series Amps	Power (W/HP)	NEMA PLUG	N.W	G.W	Packing Size (W x D x H) (mm/inch)
CUSC-48F-2D	Freezer 2 Drawers	1220*800*905 48 x 31 1/2 x 35 5/8	0	115/60/1	4	400 / 0.54	5-15P	88 kg / 194 lbs	131 kg / 289 lbs	1304*895*995 51 3/8 x 35 1/4 x 39 1/4
CUSC-60F-2D	Freezer 1 Door & 2 Drawers	1524*800*905 60 x 31 1/2 x 35 5/8	2	115/60/1	4.5	450 / 0.61	5-15P	125 kg / 275 lbs	169 kg / 372 lbs	1614*895*995 63 1/2 x 35 1/4 x 39 1/4
CUSC-60F-4D	Freezer 4 Drawers	1524*800*905 60 x 31 1/2 x 35 5/8	0	115/60/1	4.5	450 / 0.61	5-15P	140 kg / 308 lbs	184 kg / 405 lbs	1614*895*995 63 1/2 x 35 1/4 x 39 1/4
CUSC-72F-2D	Freezer 1 Door & 2 Drawers	1828*800*905 72 x 31 1/2 x 35 5/8	2	115/60/1	5.5	550 / 0.74	5-15P	145 kg / 319 lbs	190 kg / 418 lbs	1915*895*995 75 1/2 x 35 1/4 x 39 1/4
CUSC-72F-4D	Freezer 4 Drawers	1828*800*905 72 x 31 1/2 x 35 5/8	0	115/60/1	5.5	550 / 0.74	5-15P	155 kg / 341 lbs	200 kg / 440 lbs	1915*895*995 75 1/2 x 35 1/4 x 39 1/4
CUSC-84F-2D	Freezer 2 Doors & 2 Drawers	2134*800*905 84 x 31 1/2 x 35 5/8	4	115/60/1	7	700 / 0.95	5-15P	153 kg / 337 lbs	219 kg / 482 lbs	2224*895*995 87 1/2 x 35 1/4 x 39 1/4
CUSC-84F-4D	Freezer 1 Door & 4 Drawers	2134*800*905 84 x 31 1/2 x 35 5/8	2	115/60/1	7	700 / 0.95	5-15P	163 kg / 358 lbs	229 kg / 504 lbs	2224*895*995 87 1/2 x 35 1/4 x 39 1/4
CUSC-84F-6D	Freezer 6 Drawers	2134*800*905 84 x 31 1/2 x 35 5/8	0	115/60/1	7	700 / 0.95	5-15P	173 kg / 380 lbs	239 kg / 526 lbs	2224*895*995 87 1/2 x 35 1/4 x 39 1/4
CUSC-96F-2D	Freezer 2 Doors & 2 Drawers	2438*800*905 96 x 31 1/2 x 35 5/8	4	115/60/1	7.5	800 / 1.08	5-15P	175 kg / 385 lbs	235 kg / 517 lbs	2528*895*995 99 1/2 x 35 1/4 x 39 1/4
CUSC-96F-4D	Freezer 1 Door & 4 Drawers	2438*800*905 96 x 31 1/2 x 35 5/8	2	115/60/1	7.5	800 / 1.08	5-15P	185 kg / 407 lbs	245 kg / 539 lbs	2528*895*995 99 1/2 x 35 1/4 x 39 1/4
CUSC-96F-6D	Freezer 6 Drawers	2438*800*905 96 x 31 1/2 x 35 5/8	0	115/60/1	7.5	800 / 1.08	5-15P	195 kg / 429 lbs	250 kg / 550 lbs	2528*895*995 99 1/2 x 35 1/4 x 39 1/4

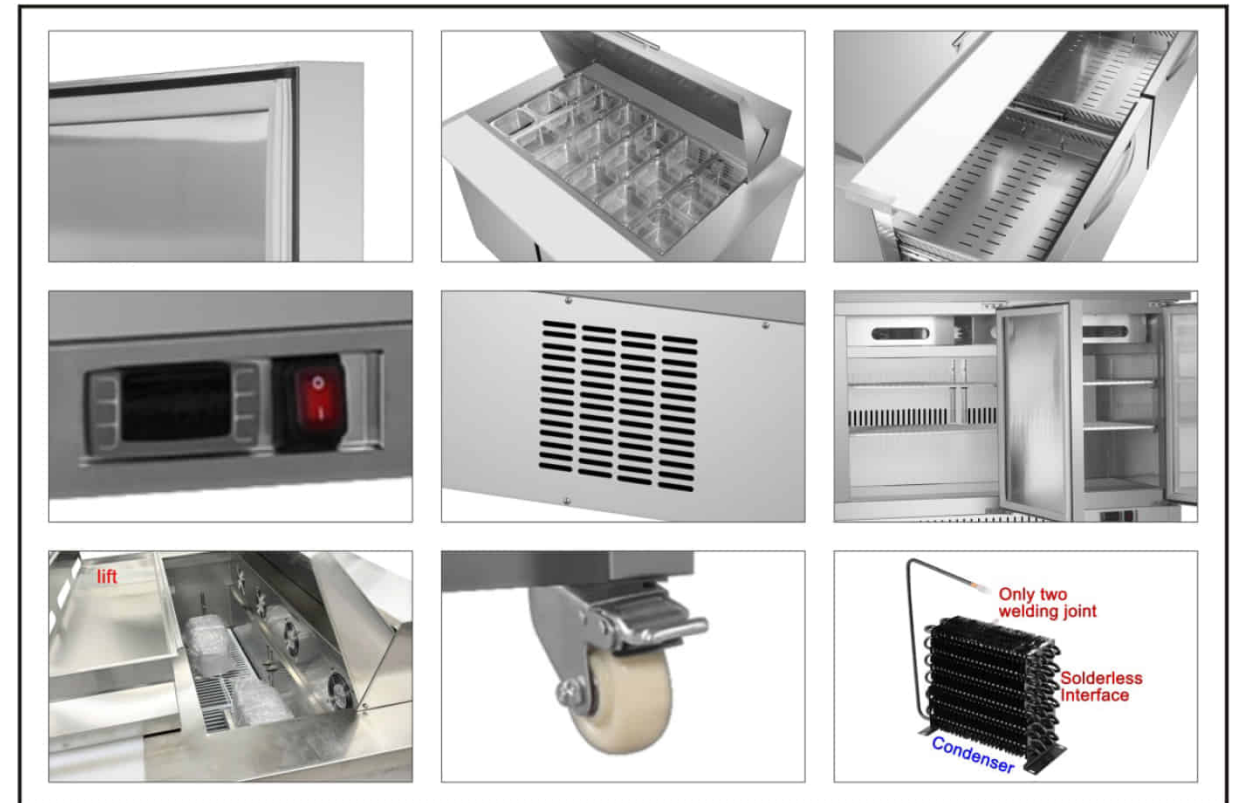


www.sub-equip.com




SALAD & SANDWICH PRE TABLE REFRIGERATOR



www.sub-equip.com



Features

- CFC free refrigerant and foam insulation
- Electronic thermostat and digital LED temperature display for accurate control and easy reading
- Self-closing swing door
- Air outlet designed to promote uniform interior temperature within the cabinet
- The coated copper tube, boasting a sturdy 0.7mm thickness, ensures durability.
Crafted from a single bent tube, minimizing the risk of leaks with only two welding joints.
- The condenser is efficiently positioned inside the condensation pan to facilitate the evaporation of excess water.
- INTERIOR: 304 Stainless Steel
- EXTERIOR: 430 Stainless Steel
- Dispose of daily waste effortlessly with the stainless steel baseplate that lifts easily
- Adjustable and heavy-duty epoxy-coated wire shelves for flexible storage options
- 1/6 size Polycarbonate GN pan and plastic cutting board included
- Easy to mount 4" casters (front casters with brakes) are standard with all units
- Interior temperature range: 1°C to 4°C (33°F to 40°F)
- Electrical specifications: 115/60/1 with a NEMA 5-15P plug and a 10ft cord. Ⓢ
- SGS & SGS Sanitation Certificate   



www.sub-equip.com

Salad & Sandwich Pre Table Refrigerator

- Interior temperature range: 1°C to 4°C (33°F to 40°F)
- Cutting Board Depth: 279 mm or 11"



Model	Doors	1/6 Size Pan Capacity	Exterior Dimensions (W x D x H) (mm/inch)	Shelves	Voltage (V/Hz/Ph)	Elite Series Amps	Power (W/HP)	NEMA PLUG	N.W	G.W	Packing Size (W x D x H) (mm/inch)
CSSU-29	Regular Top 1 Door	8	736*812*905 or 1079 29 x 32 x 35 5/8 or 42 1/2	2	115/60/1	3	300/0.4	5-15P	70 kg 155 lbs	101 kg 223 lbs	816*855*1145 32 1/8 x 33 1/2 x 45
CSSU-36	Regular Top 2 Doors	10	920*812*905 or 1079 36 1/4 x 32 x 35 5/8 or 42 1/2	4	115/60/1	3	300/0.4	5-15P	79.5 kg 175 lbs	110 kg 243 lbs	1001*855*1145 39 1/2 x 33 1/2 x 45
CSSU-48	Regular Top 2 Doors	12	1227*812*905 or 1079 48 1/4 x 32 x 35 5/8 or 42 1/2	4	115/60/1	4	400/0.54	5-15P	100 kg 220 lbs	130 kg 286 lbs	1306*855*1145 51 1/2 x 33 1/2 x 45
CSSU-60	Regular Top 2 Doors	16	1526*812*905 or 1079 60 x 32 x 35 5/8 or 42 1/2	4	115/60/1	4	400/0.54	5-15P	119 kg 262 lbs	178 kg 392 lbs	1636*855*1145 65 x 33 1/2 x 45
CSSU-72	Regular Top 3 Doors	20	1824*812*905 or 1079 71 7/8 x 32 x 35 5/8 or 42 1/2	6	115/60/1	4.5	450/0.61	5-15P	164 kg 360 lbs	214 kg 470 lbs	1904*855*1145 75 x 33 1/2 x 45



Salad & Sandwich Pre Table Refrigerator

- Interior temperature range: 1°C to 4°C (33°F to 40°F)
- Cutting Board Depth: 228 mm or 9"

Model	Doors	1/6 Size Pan Capacity	Exterior Dimensions (W x D x H) (mm/inch)	Shelves	Voltage (V/Hz/Ph)	Elite Series Amps	Power (W/HP)	NEMA PLUG	N.W	G.W	Packing Size (W x D x H) (mm/inch)
CSSU-29M	Mega Top 1 Door	12	736*926*905 or 1117 29 x 36 1/2 x 35 5/8 or 44	2	115/60/1	3	300/0.4	5-15P	72 kg 158 lbs	111 kg 244 lbs	816*945*1210 32 1/8 x 37 1/4 x 47 3/4
CSSU-36M	Mega Top 2 Doors	15	920*926*905 or 1117 36 1/4 x 36 1/2 x 35 5/8 or 44	4	115/60/1	3	300/0.4	5-15P	79.5 kg 175 lbs	110 kg 243 lbs	1001*945*1210 39 1/2 x 37 1/4 x 47 3/4
CSSU-48M	Mega Top 2 Doors	18	1227*926*905 or 1117 48 1/4 x 36 1/2 x 35 5/8 or 44	4	115/60/1	4	400/0.54	5-15P	100 kg 220 lbs	130 kg 286 lbs	1306*945*1210 51 1/2 x 37 1/4 x 47 3/4
CSSU-60M	Mega Top 2 Doors	24	1526*926*905 or 1117 60 x 36 1/2 x 35 5/8 or 44	4	115/60/1	4	400/0.54	5-15P	119 kg 262 lbs	178 kg 392 lbs	1636*945*1210 65 x 37 1/4 x 47 3/4
CSSU-72M	Mega Top 3 Doors	30	1824*926*905 or 1117 71 7/8 x 36 1/2 x 35 5/8 or 44	6	115/60/1	4.5	450/0.61	5-15P	164 kg 360 lbs	214 kg 470 lbs	1904*945*1210 75 x 37 1/4 x 47 3/4



www.sub-equip.com

Salad & Sandwich Pre Table Refrigerator With Drawer

- Interior temperature range: 1°C to 4°C (33°F to 40°F)
- Cutting Board Depth: 279 mm or 11"



Model	Doors & Drawers	1/6 Size Pan Capacity	Exterior Dimensions (W x D x H) (mm/inch)	Shelves	Voltage (V/Hz/Ph)	Elite Series Amps	Power (W/HP)	NEMA PLUG	N.W	G.W	Packing Size (W x D x H) (mm/inch)
CSSU-29-2D	Regular Top 2 Drawers	8	736*812*905 or 1079 29 x 32 x 35 5/8 or 42 1/2	0	115/60/1	3	300/0.4	5-15P	75 kg 166 lbs	106 kg 234 lbs	816*855*1145 32 1/8 x 33 1/2 x 45
CSSU-36-2D	Regular Top 1 Door & 2 Drawers	10	920*812*905 or 1079 36 1/4 x 32 x 35 5/8 or 42 1/2	2	115/60/1	3	300/0.4	5-15P	84.5 kg 186 lbs	115 kg 254 lbs	1001*855*1145 39 1/2 x 33 1/2 x 45
CSSU-36-4D	Regular Top 4 Drawers	10	920*812*905 or 1079 36 1/4 x 32 x 35 5/8 or 42 1/2	0	115/60/1	3	300/0.4	5-15P	89.5 kg 197 lbs	120 kg 264 lbs	1001*855*1145 39 1/2 x 33 1/2 x 45
CSSU-48-2D	Regular Top 1 Door & 2 Drawers	12	1227*812*905 or 1079 48 1/4 x 32 x 35 5/8 or 42 1/2	2	115/60/1	4	400/0.54	5-15P	105 kg 231 lbs	135 kg 297 lbs	1306*855*1145 51 1/2 x 33 1/2 x 45
CSSU-48-4D	Regular Top 4 Drawers	12	1227*812*905 or 1079 48 1/4 x 32 x 35 5/8 or 42 1/2	0	115/60/1	4	400/0.54	5-15P	110 kg 242 lbs	140 kg 308 lbs	1306*855*1145 51 1/2 x 33 1/2 x 45
CSSU-60-2D	Regular Top 1 Door & 2 Drawers	16	1526*812*905 or 1079 60 x 32 x 35 5/8 or 42 1/2	2	115/60/1	4	400/0.54	5-15P	124 kg 273 lbs	183 kg 403 lbs	1636*855*1145 65 x 33 1/2 x 45
CSSU-60-4D	Regular Top 4 Drawers	16	1526*812*905 or 1079 60 x 32 x 35 5/8 or 42 1/2	0	115/60/1	4	400/0.54	5-15P	119 kg 262 lbs	178 kg 392 lbs	1636*855*1145 65 x 33 1/2 x 45
CSSU-72-2D	Regular Top 2 Doors & 2 Drawers	20	1824*812*905 or 1079 71 7/8 x 32 x 35 5/8 or 42 1/2	4	115/60/1	4.5	450/0.61	5-15P	164 kg 360 lbs	214 kg 470 lbs	1904*855*1145 75 x 33 1/2 x 45
CSSU-72-4D	Regular Top 1 Door & 4 Drawers	20	1824*812*905 or 1079 71 7/8 x 32 x 35 5/8 or 42 1/2	2	115/60/1	4.5	450/0.61	5-15P	169 kg 372 lbs	219 kg 482 lbs	1904*855*1145 75 x 33 1/2 x 45
CSSU-72-6D	Regular Top 6 Drawers	20	1824*812*905 or 1079 71 7/8 x 32 x 35 5/8 or 42 1/2	0	115/60/1	4.5	450/0.61	5-15P	174 kg 383 lbs	224 kg 493 lbs	1904*855*1145 75 x 33 1/2 x 45



www.sub-equip.com

Salad & Sandwich Pre Table Refrigerator with Drawer

-Interior temperature range: 1°C to 4°C (33°F to 40°F)

-Cutting Board Depth: 228 mm or 9"



Model	Doors & Drawers	1/6 Size Pan Capacity	Exterior Dimensions (W x D x H) (mm/inch)	Shelves	Voltage (V/Hz/Ph)	Elite Series Amps	Power (W/HP)	NEMA PLUG	N.W	G.W	Packing Size (W x D x H) (mm/inch)
CSSU-29M-2D	Mega Top 2 Drawers	12	736*926*905 or 1117 29 x 36 1/2 x 35 5/8 or 44	0	115/60/1	3	300/0.4	5-15P	87 kg 191 lbs	126 kg 277 lbs	816*945*1210 32 1/8 x 37 1/4 x 47 3/4
CSSU-36M-2D	Mega Top 1 Door & 2 Drawers	15	920*926*905 or 1117 36 1/4 x 36 1/2 x 35 5/8 or 44	2	115/60/1	3	300/0.4	5-15P	103 kg 226 lbs	146 kg 321 lbs	1001*945*1210 39 1/2 x 37 1/4 x 47 3/4
CSSU-36M-4D	Mega Top 4 Drawers	15	920*926*905 or 1117 36 1/4 x 36 1/2 x 35 5/8 or 44	0	115/60/1	3	300/0.4	5-15P	118 kg 260 lbs	161 kg 354 lbs	1001*945*1210 39 1/2 x 37 1/4 x 47 3/4
CSSU-48M-2D	Mega Top 1 Door & 2 Drawers	18	1227*926*905 or 1117 48 1/4 x 36 1/2 x 35 5/8 or 44	2	115/60/1	4	400/0.54	5-15P	115 kg 253 lbs	160 kg 352 lbs	1306*945*1210 51 1/2 x 37 1/4 x 47 3/4
CSSU-48M-4D	Mega Top 4 Drawers	18	1227*926*905 or 1117 48 1/4 x 36 1/2 x 35 5/8 or 44	0	115/60/1	4	400/0.54	5-15P	130 kg 286 lbs	175 kg 385 lbs	1306*945*1210 51 1/2 x 37 1/4 x 47 3/4
CSSU-60M-2D	Mega Top 1 Door & 2 Drawers	24	1526*926*905 or 1117 60 x 36 1/2 x 35 5/8 or 44	2	115/60/1	4	400/0.54	5-15P	135 kg 297 lbs	192 kg 422 lbs	1636*945*1210 65 x 37 1/4 x 47 3/4
CSSU-60M-4D	Mega Top 4 Drawers	24	1526*926*905 or 1117 60 x 36 1/2 x 35 5/8 or 44	0	115/60/1	4	400/0.54	5-15P	150 kg 330 lbs	206 kg 453 lbs	1636*945*1210 65 x 37 1/4 x 47 3/4
CSSU-72M-2D	Mega Top 2 Doors & 2 Drawers	30	1824*926*905 or 1117 71 7/8 x 36 1/2 x 35 5/8 or 44	4	115/60/1	4	450/0.61	5-15P	164 kg 360 lbs	214 kg 470 lbs	1905*945*1210 75 x 37 1/4 x 47 3/4
CSSU-72M-4D	Mega Top 1 Door & 4 Drawers	30	1824*926*905 or 1117 71 7/8 x 36 1/2 x 35 5/8 or 44	2	115/60/1	4.5	450/0.61	5-15P	169 kg 372 lbs	219 kg 482 lbs	1905*945*1210 75 x 37 1/4 x 47 3/4
CSSU-72M-6D	Mega Top 6 Drawers	30	1824*926*905 or 1117 71 7/8 x 36 1/2 x 35 5/8 or 44	0	115/60/1	4.5	450/0.61	5-15P	174 kg 383 lbs	224 kg 493 lbs	1905*945*1210 75 x 37 1/4 x 47 3/4



www.sub-equip.com

SANDWICH PRE TABLE REFRIGERATOR WITH SIDE MOUNTED COMPRESSOR





www.sub-equip.com

Salad & Sandwich Pre Table Refrigerator with Side Mounted Compressor

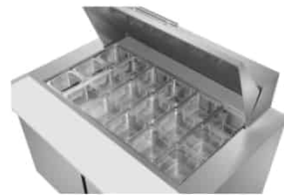
-Interior temperature range: 1° C to 4°C (33° F to 40°F)
-Cutting Board Depth: 279 mm or 11"



Model	Doors	1/6 Size Pan Capacity	Exterior Dimensions (W x D x H) (mm/inch)	Shelves	Voltage (V/Hz/Ph)	Elite Series Amps	Power (W/HP)	NEMA PLUG	N.W	G.W	Packing Size (W x D x H) (mm/inch)
CUSC-48R	Regular Top 1 Door	12	1222*837*905 or 1079 48 1/8 x 33 x 35 5/8 or 42 1/2	2	115/60/1	4	400/0.54	5-15P	95 kg 209 lbs	135 kg 297 lbs	1304*910*1165 51 1/2 x 36 x 45 1/2
CUSC-60R	Regular Top 2 Doors	16	1526*837*905 or 1079 60 x 33 x 35 5/8 or 42 1/2	4	115/60/1	4.5	450/0.61	5-15P	120 kg 264 lbs	160 kg 352 lbs	1614*910*1165 63 1/2 x 36 x 45 1/2
CUSC-72R	Regular Top 2 Doors	20	1830*837*905 or 1079 72 x 33 x 35 5/8 or 42 1/2	4	115/60/1	5	500/0.68	5-15P	145 kg 319 lbs	190 kg 418 lbs	1919*910*1165 75 1/2 x 36 x 45 1/2
CUSC-84R	Regular Top 3 Doors	22	2136*837*905 or 1079 84 x 33 x 35 5/8 or 42 1/2	6	115/60/1	5.5	550/0.74	5-15P	165 kg 363 lbs	205 kg 451 lbs	2224*910*1165 87 1/2 x 36 x 45 1/2
CUSC-96R	Regular Top 3 Doors	26	2440*837*905 or 1079 96 x 33 x 35 5/8 or 42 1/2	6	115/60/1	6	600/0.81	5-15P	190 kg 418 lbs	230 kg 506 lbs	2528*910*1165 99 1/2 x 36 x 45 1/2

Salad & Sandwich Pre Table Refrigerator with Side Mounted Compressor

-Interior temperature range: 1° C to 4°C (33° F to 40°F)
-Cutting Board Depth: 228 mm or 9"



Model	Doors	1/6 Size Pan Capacity	Exterior Dimensions (W x D x H) (mm/inch)	Shelves	Voltage (V/Hz/Ph)	Elite Series Amps	Power (W/HP)	NEMA PLUG	N.W	G.W	Packing Size (W x D x H) (mm/inch)
CUSC-48M	Mega Top 1 Door	18	1222*926*905 or 1117 48 1/8 x 36 1/2 x 35 5/8 or 44	2	115/60/1	4	400/0.54	5-15P	105 kg 231 lbs	150 kg 330 lbs	1304*945*1210 51 1/2 x 37 1/4 x 47 3/4
CUSC-60M	Mega Top 2 Doors	24	1526*926*905 or 1117 60 x 36 1/2 x 35 5/8 or 44	4	115/60/1	4.5	450/0.61	5-15P	130 kg 286 lbs	175 kg 385 lbs	1614*945*1210 63 1/2 x 37 1/4 x 47 3/4
CUSC-72M	Mega Top 2 Doors	30	1830*926*905 or 1117 72 x 36 1/2 x 35 5/8 or 44	4	115/60/1	5	500/0.68	5-15P	155 kg 341 lbs	200 kg 440 lbs	1919*945*1210 75 1/2 x 37 1/4 x 47 3/4
CUSC-84M	Mega Top 3 Doors	33	2136*926*905 or 1117 84 x 36 1/2 x 35 5/8 or 44	6	115/60/1	5.5	550/0.74	5-15P	175 kg 385 lbs	215 kg 473 lbs	2224*945*1210 87 1/2 x 37 1/4 x 47 3/4
CUSC-96M	Mega Top 3 Doors	39	2440*926*905 or 1117 96 x 36 1/2 x 35 5/8 or 44	6	115/60/1	6	600/0.81	5-15P	200 kg 440 lbs	240 kg 528 lbs	2528*945*1210 99 1/2 x 37 1/4 x 47 3/4



www.sub-equip.com

Salad & Sandwich Pre Table Refrigerator with Side Mounted Compressor & Drawer

-Interior temperature range: 1° C to 4°C (33° F to 40°F)
-Cutting Board Depth: 279 mm or 11"



Model	Doors & Drawers	1/6 Size Pan Capacity	Exterior Dimensions (W x D x H) (mm/inch)	Shelves	Voltage (V/Hz/Ph)	Elite Series Amps	Power (W/HP)	NEMA PLUG	N.W	G.W	Packing Size (W x D x H) (mm/inch)
CUSC-48R-2D	Regular Top 2 Drawers	12	1222*837*905 or 1079 48 1/8 x 33 x 35 5/8 or 42 1/2	0	115/60/1	4	400/0.54	5-15P	100 kg 220 lbs	140 kg 308 lbs	1304*910*1165 51 1/2 x 36 x 45 1/2
CUSC-60R-2D	Regular Top 1 Door & 2 Drawers	16	1526*837*905 or 1079 60 x 33 x 35 5/8 or 42 1/2	2	115/60/1	4.5	450/0.61	5-15P	128 kg 282 lbs	168 kg 370 lbs	1614*910*1165 63 1/2 x 36 x 45 1/2
CUSC-60R-4D	Regular Top 4 Drawers	16	1526*837*905 or 1079 60 x 33 x 35 5/8 or 42 1/2	0	115/60/1	4.5	450/0.61	5-15P	136 kg 299 lbs	176 kg 387 lbs	1614*910*1165 63 1/2 x 36 x 45 1/2
CUSC-72R-2D	Regular Top 1 Door & 2 Drawers	20	1830*837*905 or 1079 72 x 33 x 35 5/8 or 42 1/2	2	115/60/1	5	500/0.68	5-15P	155 kg 341 lbs	200 kg 440 lbs	1919*910*1165 75 1/2 x 36 x 45 1/2
CUSC-72R-4D	Regular Top 4 Drawers	20	1830*837*905 or 1079 72 x 33 x 35 5/8 or 42 1/2	0	115/60/1	5	500/0.68	5-15P	165 kg 363 lbs	210 kg 462 lbs	1919*910*1165 75 1/2 x 36 x 45 1/2
CUSC-84R-2D	Regular Top 2 Doors & 2 Drawers	22	2136*837*905 or 1080 84 x 33 x 35 5/8 or 42 1/2	4	115/60/1	5.5	550/0.74	5-15P	173 kg 380 lbs	213 kg 468 lbs	2224*910*1165 87 1/2 x 36 x 45 1/2
CUSC-84R-4D	Regular Top 1 Door & 4 Drawers	22	2136*837*905 or 1080 84 x 33 x 35 5/8 or 42 1/2	2	115/60/1	5.5	550/0.74	5-15P	181 kg 398 lbs	221 kg 486 lbs	2224*910*1165 87 1/2 x 36 x 45 1/2
CUSC-84R-6D	Regular Top 6 Drawers	22	2136*837*905 or 1080 84 x 33 x 35 5/8 or 42 1/2	0	115/60/1	5.5	550/0.74	5-15P	189 kg 416 lbs	221 kg 486 lbs	2224*910*1165 87 1/2 x 36 x 45 1/2
CUSC-96R-2D	Regular Top 2 Doors & 2 Drawers	26	2440*837*905 or 1080 96 x 33 x 35 5/8 or 42 1/2	4	115/60/1	6	600/0.81	5-15P	198 kg 436 lbs	238 kg 523 lbs	2528*910*1165 99 1/2 x 36 x 45 1/2
CUSC-96R-4D	Regular Top 1 Door & 4 Drawers	26	2440*837*905 or 1080 96 x 33 x 35 5/8 or 42 1/2	2	115/60/1	6	600/0.81	5-15P	206 kg 453 lbs	246 kg 541 lbs	2528*910*1165 99 1/2 x 36 x 45 1/2
CUSC-96R-6D	Regular Top 6 Drawers	26	2440*837*905 or 1080 96 x 33 x 35 5/8 or 42 1/2	0	115/60/1	6	600/0.81	5-15P	216 kg 475 lbs	254 kg 559 lbs	2528*910*1165 99 1/2 x 36 x 45 1/2



www.sub-equip.com

Salad & Sandwich Pre Table Refrigerator with Side Mounted Compressor & Drawer

-Interior temperature range: 1° C to 4°C (33° F to 40°F)

-Cutting Board Depth: 228 mm or 9"



Model	Doors & Drawers	1/6 Size Pan Capacity	Exterior Dimensions (W x D x H) (mm/inch)	Shelves	Voltage (V/Hz/Ph)	Elite Series Amps	Power (W/HP)	NEMA PLUG	N.W	G.W	Packing Size (W x D x H) (mm/inch)
CUSC-48M-2D	Mega Top 2 Drawers	18	1222*926*905 or 1117 48 1/8 x 36 1/2 x 35 5/8 or 44	0	115/60/1	4	400/0.54	5-15P	110 kg 242 lbs	155 kg 341 lbs	1304*910*1165 51 1/2 x 36 x 45 1/2
CUSC-60M-2D	Mega Top 1 Door & 2 Drawers	24	1526*926*905 or 1117 60 x 36 1/2 x 35 5/8 or 44	2	115/60/1	4.5	450/0.61	5-15P	138 kg 304 lbs	183 kg 403 lbs	1614*910*1165 63 1/2 x 36 x 45 1/2
CUSC-60M-4D	Mega Top 4 Drawers	24	1526*926*905 or 1117 60 x 36 1/2 x 35 5/8 or 44	0	115/60/1	4.5	450/0.61	5-15P	146 kg 321 lbs	171 kg 376 lbs	1614*910*1165 63 1/2 x 36 x 45 1/2
CUSC-72M-2D	Mega Top 1 Door & 2 Drawers	30	1830*926*905 or 1117 72 x 36 1/2 x 35 5/8 or 44	2	115/60/1	5	500/0.68	5-15P	165 kg 363 lbs	210 kg 462 lbs	1919*910*1165 75 1/2 x 36 x 45 1/2
CUSC-72M-4D	Mega Top 4 Drawers	30	1830*926*905 or 1117 72 x 36 1/2 x 35 5/8 or 44	0	115/60/1	5	500/0.68	5-15P	173 kg 380 lbs	218 kg 479 lbs	1919*910*1165 75 1/2 x 36 x 45 1/2
CUSC-84M-2D	Mega Top 2 Doors & 2 Drawers	33	2136*926*905 or 1117 84 x 36 1/2 x 35 5/8 or 44	4	115/60/1	5.5	550/0.74	5-15P	183 kg 403 lbs	223 kg 490 lbs	2224*910*1165 87 1/2 x 36 x 45 1/2
CUSC-84M-4D	Mega Top 1 Door & 4 Drawers	33	2136*926*905 or 1117 84 x 36 1/2 x 35 5/8 or 44	2	115/60/1	5.5	550/0.74	5-15P	191 kg 420 lbs	231 kg 508 lbs	2224*910*1165 87 1/2 x 36 x 45 1/2
CUSC-84M-6D	Mega Top 6 Drawers	33	2136*926*905 or 1117 84 x 36 1/2 x 35 5/8 or 44	0	115/60/1	5.5	550/0.74	5-15P	199 kg 438 lbs	239 kg 525 lbs	2224*910*1165 87 1/2 x 36 x 45 1/2
CUSC-96M-2D	Mega Top 2 Doors & 2 Drawers	39	2440*926*905 or 1117 96 x 36 1/2 x 35 5/8 or 44	4	115/60/1	6	600/0.81	5-15P	208 kg 457 lbs	248 kg 546 lbs	2528*910*1165 99 1/2 x 36 x 45 1/2
CUSC-96M-4D	Mega Top 1 Door & 4 Drawers	39	2440*926*905 or 1117 96 x 36 1/2 x 35 5/8 or 44	2	115/60/1	6	600/0.81	5-15P	216 kg 475 lbs	256 kg 563 lbs	2528*910*1165 99 1/2 x 36 x 45 1/2
CUSC-96M-6D	Mega Top 6 Drawers	39	2440*926*905 or 1117 96 x 36 1/2 x 35 5/8 or 44	0	115/60/1	6	600/0.81	5-15P	224 kg 493 lbs	264 kg 580 lbs	2528*910*1165 99 1/2 x 36 x 45 1/2



www.sub-equip.com

PRE TABLE WITH SNEEZE GLASS REFRIGERATOR



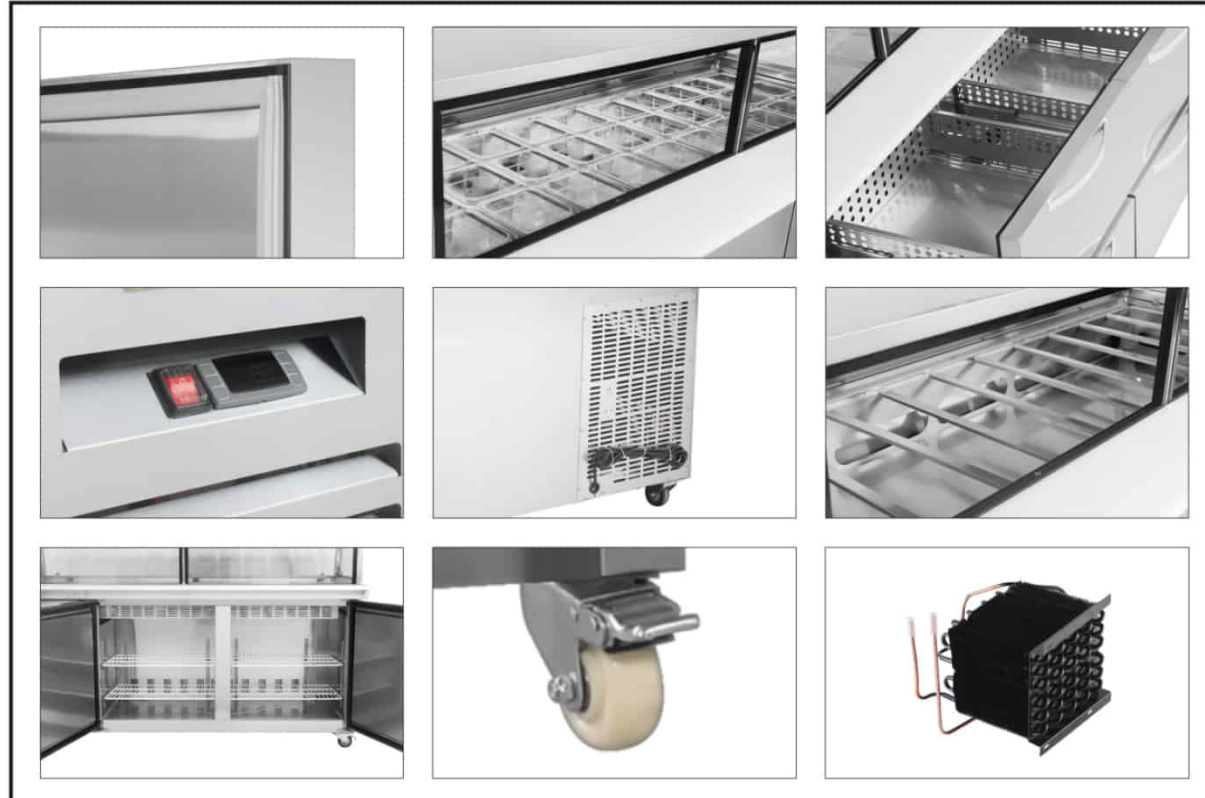
Pre Table With Sneeze Glass Refrigerator

-Interior temperature range: 1° C to 4°C (33° F to 40°F)

-Cutting Board Depth: 219 mm or 8 5/8"



Model	Doors & Drawers	1/6 Size Pan Capacity	Exerior Dimensions (W x D x H) (mm/inch)	Shelves	Voltage (V/Hz/Ph)	Elite Series Amps	Power (W/HP)	NEMA PLUG	N.W	G.W	Packing Size (W x D x H) (mm/inch)
CSSU-S60MG	Mega Top 2 Doors	24	1526*877*905 or 1387 60 x 34 1/2 x 35 5/8 or 54 5/8	4	115/60/1	4.5	450/0.61	5-15P	150 kg 331 lbs	215 kg 474 lbs	1610*905*1473 63 1/2 x 35 5/8 x 58
CSSU-S60MG-2D	Mega Top 1 Door & 2 Drawers	24	1526*877*905 or 1387 60 x 34 1/2 x 35 5/8 or 54 5/8	2	115/60/1	4.5	450/0.61	5-15P	165 kg 364 lbs	230 kg 507 lbs	1610*905*1473 63 1/2 x 35 5/8 x 58
CSSU-S60MG-4D	Mega Top 4 Drawers	24	1526*877*905 or 1387 60 x 34 1/2 x 35 5/8 or 54 5/8	0	115/60/1	4.5	450/0.61	5-15P	180 kg 397 lbs	245 kg 540 lbs	1610*905*1473 63 1/2 x 35 5/8 x 58
CSSU-S72MG	Mega Top 2 Doors	30	1830*877*905 or 1387 72 x 34 1/2 x 35 5/8 or 54 5/8	4	115/60/1	5	500/0.68	5-15P	195 kg 430 lbs	275 kg 607 lbs	1915*905*1473 75 1/2 x 35 5/8 x 58
CSSU-S72MG-2D	Mega Top 1 Doors & 2 Drawers	30	1830*877*905 or 1387 72 x 34 1/2 x 35 5/8 or 54 5/8	2	115/60/1	5	500/0.68	5-15P	210 kg 430 lbs	275 kg 607 lbs	1915*905*1473 75 1/2 x 35 5/8 x 58
CSSU-S72MG-4D	Mega Top 4 Drawers	30	1830*877*905 or 1387 72 x 34 1/2 x 35 5/8 or 54 5/8	0	115/60/1	5	500/0.68	5-15P	225 kg 496 lbs	275 kg 607 lbs	1915*905*1473 75 1/2 x 35 5/8 x 58
CSSU-S84MG	Mega Top 3 Doors	36	2136*877*905 or 1387 84 x 34 1/2 x 35 5/8 or 54 5/8	6	115/60/1	5.5	550/0.74	5-15P	210 kg 463 lbs	290 kg 640 lbs	2220*905*1473 87 1/2 x 35 5/8 x 58
CSSU-S84MG-2D	Mega Top 2 Doors & 2 Drawers	36	2136*877*905 or 1387 84 x 34 1/2 x 35 5/8 or 54 5/8	4	115/60/1	5.5	550/0.74	5-15P	240 kg 529 lbs	320 kg 706 lbs	2220*905*1473 87 1/2 x 35 5/8 x 58
CSSU-S84MG-4D	Mega Top 1 Doors & 4 Drawers	36	2136*877*905 or 1387 84 x 34 1/2 x 35 5/8 or 54 5/8	2	115/60/1	5.5	550/0.74	5-15P	255 kg 562 lbs	335 kg 739 lbs	2220*905*1473 87 1/2 x 35 5/8 x 58
CSSU-S84MG-6D	Mega Top 6 Drawers	36	2136*877*905 or 1387 84 x 34 1/2 x 35 5/8 or 54 5/8	0	115/60/1	5.5	550/0.74	5-15P	270 kg 596 lbs	350 kg 772 lbs	2220*905*1473 87 1/2 x 35 5/8 x 58
CSSU-S96MG	Mega Top 3 Doors	42	2440*877*905 or 1387 96 x 34 1/2 x 35 5/8 or 54 5/8	6	115/60/1	6	600/0.81	5-15P	260 kg 572 lbs	340 kg 748 lbs	2524*905*1473 99 3/8 x 35 5/8 x 58
CSSU-S96MG-2D	Mega Top 2 Doors & 2 Drawers	42	2440*877*905 or 1387 96 x 34 1/2 x 35 5/8 or 54 5/8	4	115/60/1	6	600/0.81	5-15P	270 kg 596 lbs	350 kg 772 lbs	2524*905*1473 99 3/8 x 35 5/8 x 58
CSSU-S96MG-4D	Mega Top 1 Doors & 4 Drawers	42	2440*877*905 or 1387 96 x 34 1/2 x 35 5/8 or 54 5/8	2	115/60/1	6	600/0.81	5-15P	285 kg 629 lbs	365 kg 805 lbs	2524*905*1473 99 3/8 x 35 5/8 x 58
CSSU-S96MG-6D	Mega Top 6 Drawers	42	2440*877*905 or 1387 96 x 34 1/2 x 35 5/8 or 54 5/8	0	115/60/1	6	600/0.81	5-15P	300 kg 662 lbs	380 kg 838 lbs	2524*905*1473 99 3/8 x 35 5/8 x 58



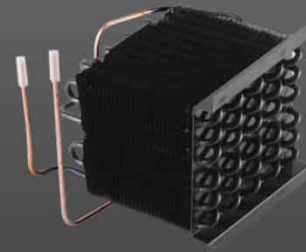
Features

- CFC free refrigerant and foam insulation
- Built-in 19" high sneeze guard constructed from tempered glass on 3 sides with a stainless steel frame and flat top Comes with 1/6 size 4" deep pans and adapter bars, unit can accommodate pans that are 6" deep
- Electronic thermostat and digital LED temperature display for accurate control and easy reading
- Self-closing swing door
- Drawers are designed to fit a standard full size 1/1 pan
- Air outlet designed to promote uniform interior temperature within the cabinet
- The coated copper tube, boasting a sturdy 0.7mm thickness, ensures durability. Crafted from a single bent tube, minimizing the risk of leaks with only two welding joints.
- The condenser is efficiently positioned inside the condensation pan to facilitate the evaporation of excess water.
- INTERIOR: 304 Stainless Steel
- EXTERIOR: 430 Stainless Steel
- Dispose of daily waste effortlessly with the stainless steel baseplate that lifts easily
- Heavy-duty polyethylene coated adjustable wire shelves
- 1/6 size Polycarbonate GN pan and plastic cutting board included
- Easy to mount 4" casters (front casters with brakes) are standard with all units
- Interior temperature range: 1° C to 4°C (33° F to 40°F)
- Electrical specifications: 115/60/1 with a NEMA 5-15P plug and a 10ft cord.
- SGS & SGS Sanitation Certificate



www.sub-equip.com

PIZZA PREP TABLE REFRIGERATOR



Features

- CFC free refrigerant and foam insulation
- Electronic thermostat and digital LED temperature display for accurate control and easy reading
- Self-closing swing door
- Air outlet designed to promote uniform interior temperature within the cabinet
- The coated copper tube, boasting a sturdy 0.7mm thickness, ensures durability. Crafted from a single bent tube, minimizing the risk of leaks with only two welding joints.
- The condenser is efficiently positioned inside the condensation pan to facilitate the evaporation of excess water.
- INTERIOR: 304 Stainless Steel
- EXTERIOR: 430 Stainless Steel
- Dispose of daily waste effortlessly with the stainless steel baseplate that lifts easily
- Adjustable and heavy-duty epoxy-coated wire shelves for flexible storage options
- 1/3 size Polycarbonate GN pan and plastic cutting board included
- Easy to mount 4" casters (front casters with brakes) are standard with all units
- Interior temperature range: 1°C to 4°C (33°F to 40°F)
- Electrical specifications: 115/60/1 with a NEMA 5-15P plug and a 10ft cord.
- SGS & SGS Sanitation Certificate



www.sub-equip.com

Pizza Prep Table Refrigerator

-Interior temperature range: 1° C to 4°C (33° F to 40°F)

-Cutting Board Depth: 453 mm or 17 7/8"



Model	Type	1/3 Size Pan Capacity	Exterior Dimensions (W x D x H) (mm/inch)	Shelves	Voltage (V/Hz/Ph)	Elite Series Amps	Power (W/HP)	NEMA PLUG	N.W	G.W	Packing Size (W x D x H) (mm/inch)
CPP-44	Refrigerator 1 Door	6	1222*896*946 or 1097 48 x 35 3/8 x 37 1/4 or 43 1/4	2	115/60/1	4	400/0.54	5-15P	118.5 kg 262 lbs	168.5 kg 372 lbs	1300*945*1180 51 1/4 x 37 1/4 x 46 1/2
CPP-44-2D	Refrigerator 2 Drawers	6	1222*896*946 or 1097 48 x 35 3/8 x 37 1/4 or 43 1/4	0	115/60/1	4	400/0.54	5-15P	128.5 kg 284 lbs	178.5 kg 394 lbs	1300*945*1180 51 1/4 x 37 1/4 x 46 1/2
CPP-67	Refrigerator 2 Doors	9	1830*896*946 or 1097 72 x 35 3/8 x 37 1/4 or 43 1/4	4	115/60/1	4.5	450/0.61	5-15P	129 kg 284 lbs	183 kg 403 lbs	1910*945*1180 75 1/4 x 37 1/4 x 46 1/2
CPP-67-2D	Refrigerator 1 Door & 2 Drawers	9	1830*896*946 or 1097 72 x 35 3/8 x 37 1/4 or 43 1/4	2	115/60/1	4.5	450/0.61	5-15P	139 kg 307 lbs	203 kg 448 lbs	1910*945*1180 75 1/4 x 37 1/4 x 46 1/2
CPP-67-4D	Refrigerator 4 Drawers	9	1830*896*946 or 1097 72 x 35 3/8 x 37 1/4 or 43 1/4	0	115/60/1	4.5	450/0.61	5-15P	159 kg 351 lbs	223 kg 492 lbs	1910*945*1180 75 1/4 x 37 1/4 x 46 1/2
CPP-93	Refrigerator 3 Doors	12	2440*896*946 or 1097 96 x 35 3/8 x 37 1/4 or 43 1/4	6	115/60/1	6	600/0.81	5-15P	190 kg 418 lbs	230 kg 506 lbs	2520*945*1180 99 1/4 x 37 1/4 x 46 1/2
CPP-93-2D	Refrigerator 2 Doors & 2 Drawers	12	2440*896*946 or 1097 96 x 35 3/8 x 37 1/4 or 43 1/4	4	115/60/1	6	600/0.81	5-15P	198 kg 436 lbs	238 kg 523 lbs	2520*945*1180 99 1/4 x 37 1/4 x 46 1/3
CPP-93-4D	Refrigerator 1 Door & 4 Drawers	12	2440*896*946 or 1097 96 x 35 3/8 x 37 1/4 or 43 1/4	2	115/60/1	6	600/0.81	5-15P	206 kg 453 lbs	246 kg 541 lbs	2520*945*1180 99 1/4 x 37 1/4 x 46 1/4
CPP-93-6D	Refrigerator 6 Drawers	12	2440*896*946 or 1097 96 x 35 3/8 x 37 1/4 or 43 1/4	0	115/60/1	6	600/0.81	5-15P	216 kg 475 lbs	254 kg 559 lbs	2520*945*1180 99 1/4 x 37 1/4 x 46 1/4



www.sub-equip.com

WORKSTATION REFRIGERATOR

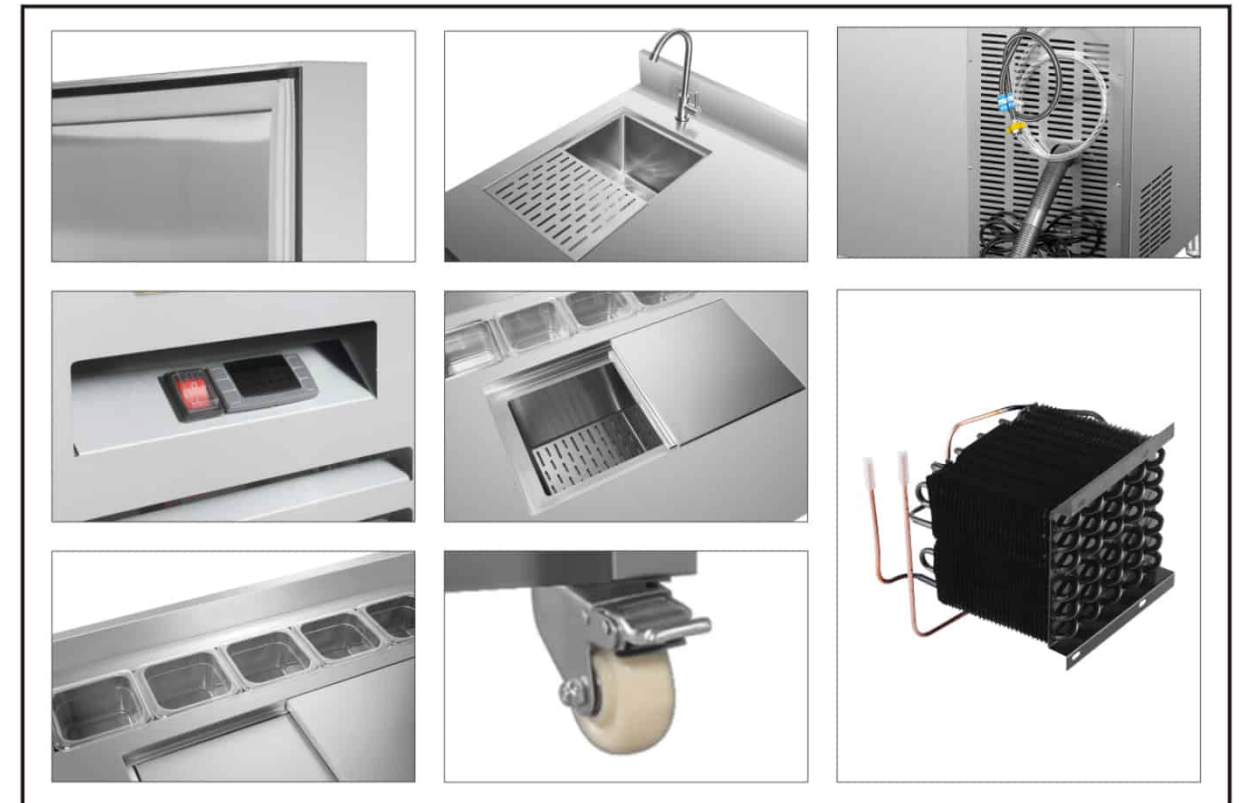


Features

- CFC free refrigerant and foam insulation
- Electronic thermostat and digital LED temperature display for accurate control and easy reading
- Self-closing swing door
- The coated copper tube, boasting a Epoxy 0.7mm thickness, ensures durability. Crafted from a single bent tube, minimizing the risk of leaks with only two welding joints.
- The condenser is efficiently positioned inside the condensation pan to facilitate the evaporation of excess water.
- INTERIOR: 304 Stainless Steel
- EXTERIOR: 430 Stainless Steel
- Faucet included
- Heavy-duty polyethylene coated adjustable wire shelves
- 1/6 size stainless Steel Pans
- Easy to mount 4" casters (front casters with brakes) are standard with all units
- Interior temperature range: 1°C to 4°C (33°F to 40°F)
- Electrical specifications: 115/60/1 with a NEMA 5-15P plug and a 10ft cord.
- SGS & SGS Sanitation Certificate



www.sub-equip.com



Model	Type	1/6 Size Pan Capacity	Exterior Dimensions (W x D x H) (mm/inch)	Shelves	Voltage (V/Hz/Ph)	Elite Series Amps	Power (W/HP)	NEMA PLUG	N.W	G.W	Packing Size (W x D x H) (mm/inch)
CUSS-60	Refrigerator 1 Door & 1 Drawer	5	1526*823*1002 60 1/8 x 32 1/2 x 39 1/2	2	115/60/1	4	400/0.54	5-15P	190 kg 418 lbs	240 kg 528 lbs	1636*945*1210 64 1/2 x 37 1/4 x 47 3/4
CUSS-72	Refrigerator 1 Door & 2 Drawers	6	1830*823*1002 72 x 32 1/2 x 39 1/2	2	115/60/1	4	400/0.54	5-15P	200 kg 440 lbs	260 kg 572 lbs	1904*945*1210 75 x 37 1/4 x 47 3/4
CUSS-84	Refrigerator 1 Door & 2 Drawers	7	2136*823*1002 84 x 32 1/2 x 39 1/2	2	115/60/1	5.5	550/0.74	5-15P	220 kg 484 lbs	280 kg 616 lbs	2224*945*1210 87 1/2 x 37 1/4 x 47 3/4
CUSS-96	Refrigerator 1 Door & 2 Drawers	9	2440*823*1002 96 x 32 1/2 x 39 1/2	2	115/60/1	6	600/0.81	5-15P	250 kg 550 lbs	300 kg 660 lbs	2528*945*1210 99 1/2 x 37 1/4 x 47 3/4

GRAB N GO REFRIGERATOR-CURVED ENDS



Features

- All-steel base construction with Stainless Steel Exterior
- Easily accessible light and power switch
- Rear access to refrigeration system for quick and easy service
- Adjustable leg levelers
- Stainless Steel step riser
- On-Demand PTC condensate evaporator provided for a totally self-contained system Auto defrosting and auto evaporation to prevent condensation
- Condensation pan efficiently evaporates excess water
- INTERIOR: 304 Stainless Steel
- EXTERIOR: 430 Stainless Steel
- Interior temperature range: 2°C to 8°C (36°F to 46°F)
- Electrical: 115/60/1 with NEMA 5-15P plug, 10ft cord
- SGS & SGS Sanitation Certificate



-Interior temperature range: 2°C to 8°C (36°F to 46°F)

Model	Type	Exterior Dimensions (W x D x H) (mm/inch)	Voltage (V/Hz/Ph)	Elite Series Amps	Power (W/HP)	NEMA PLUG	N.W	G.W	Packing Size (W x D x H) (mm/inch)
GNG-C30	Curved ends	762*864*838 30 x 34 x 33	115/60/1	9	601 / 0.81	5-15P	110 kg 242 lbs	130 kg 287 lbs	850*970*1037 33 1/2 x 38 1/4 x 40 7/8
GNG-C36	Curved ends	914*864*838 36 x 34 x 33	115/60/1	9.5	750 / 1.01	5-15P	120 kg 264 lbs	140 kg 309 lbs	995*970*1037 39 1/2 x 38 1/4 x 40 7/8
GNG-C50	Curved ends	1270*864*838 50 x 34 x 33	115/60/1	10	820 / 1.10	5-15P	130 kg 286 lbs	160 kg 353 lbs	1345*970*1037 53 x 38 1/4 x 40 7/8
GNG-C59	Curved ends	1499*864*838 59 x 34 x 33	115/60/1	11	1025 / 1.37	5-15P	160 kg 352 lbs	180 kg 397 lbs	1580*970*1037 62 1/4 x 38 1/4 x 40 7/8
GNG-C77	Curved ends	1956*864*838 77 x 34 x 33	115/60/1	12	1098 / 1.47	5-15P	200 kg 440 lbs	220 kg 485 lbs	2035*970*1037 80 1/8 x 38 1/4 x 40 7/8



www.sub-equip.com

GRAB N GO REFRIGERATOR-SQUARE ENDS



Features

- All-steel base construction with Stainless Steel Exterior
- Easily accessible light and power switch
- Rear access to refrigeration system for quick and easy service
- Adjustable leg levelers
- Stainless Steel step riser
- On-Demand PTC condensate evaporator provided for a totally self-contained system Auto defrosting and auto evaporation to prevent condensation
- Condensation pan efficiently evaporates excess water
- INTERIOR: 304 Stainless Steel
- EXTERIOR: 430 Stainless Steel
- Interior temperature range: 2°C to 8°C (36°F to 46°F)
- Electrical: 115/60/1 with NEMA 5-15P plug, 10ft cord
- SGS & SGS Sanitation Certificate



www.sub-equip.com



-Interior temperature range: 2°C to 8°C (36°F to 46°F)

Model	Type	Exterior Dimensions (W x D x H) (mm/inch)	Voltage (V/Hz/Ph)	Elite Series Amps	Power (W/HP)	NEMA PLUG	N.W	G.W	Packing Size (W x D x H) (mm/inch)
GNG-F30	Square ends	762*864*838 30 x 34 x 33	115/60/1	9	601 / 0.81	5-15P	110 kg 242 lbs	130 kg 287 lbs	850*970*1037 33 1/2 x 38 1/4 x 40 7/8
GNG-F36	Square ends	914*864*838 36 x 34 x 33	115/60/1	9.5	750 / 1.01	5-15P	120 kg 264 lbs	140 kg 309 lbs	995*970*1037 39 1/2 x 38 1/4 x 40 7/8
GNG-F50	Square ends	1270*864*838 50 x 34 x 33	115/60/1	10	820 / 1.10	5-15P	130 kg 286 lbs	160 kg 353 lbs	1345*970*1037 53 x 38 1/4 x 40 7/8
GNG-F59	Square ends	1499*864*838 59 x 34 x 33	115/60/1	11	1025 / 1.37	5-15P	160 kg 352 lbs	180 kg 397 lbs	1580*970*1037 62 1/4 x 38 1/4 x 40 7/8
GNG-F77	Square ends	1956*864*838 77 x 34 x 33	115/60/1	12	1098 / 1.47	5-15P	200 kg 440 lbs	220 kg 485 lbs	2035*970*1037 80 1/8 x 38 1/4 x 40 7/8



www.sub-equip.com

POWER COAT CUSTOM FINISHES



GRAND N GO - REFRIGERATED AIR CURTAIN MERCHANDISER



Features

- Digital controller
- LED light for every shelf
- With night curtain
- Adjustable shelves
- Easy to mount 4" casters (lockable in front) are standard with all units
- External: 430 Stainless Steel
- Interior 304 Stainless Steel
- With price label setting
- On-Demand PTC condensate evaporator provided for a totally self-contained system Auto defrosting and auto evaporation to prevent condensation
- Interior temperature range: 2°C to 8°C (36°F to 46°F)
- Side double tempered glass
- Electrical specifications: 115/60/1 with a NEMA 5-15P plug and a 10ft cord. Ⓢ
- 60", 72", 79" and 84" equipped with a 5-20P plug Ⓢ
- SGS & SGS Sanitation Certificate



www.sub-equip.com

Grand N Go - Refrigerated Air Curtain Merchandiser



-Interior temperature range: 2°C to 8°C (36°F to 46°F)

Model	Exerior Dimensions (W x D x H) (mm/inch)	Shelves	Voltage (V/Hz/Ph)	Elite Series Amps	Power (W/HP)	NEMA PLUG	N.W	G.W	Packing Size (W x D x H) (mm/inch)
GNG-30	762*800*2070 30 x 31 1/2 x 81 1/2	5	115/60/1	8	800 / 1.1	5-15P	160 kg 352 lbs	200 kg 440 lbs	822*840*2165.5 32 3/8 x 33 1/8 x 85 1/4
GNG-36	914*800*2070 36 31 1/2 x 81 1/2	5	115/60/1	10	1000 / 1.3	5-15P	190 kg 418 lbs	240 kg 528 lbs	974.4*840*2165.5 38 3/8 x 33 1/8 x 85 1/4
GNG-48	1220*800*2070 48 x 31 1/2 x 81 1/2	5	115/60/1	10	1000 / 1.3	5-15P	210 kg 462 lbs	260 kg 572 lbs	1279.2*840*2165.5 50 3/8 x 33 1/8 x 85 1/4
GNG-60	1524*800*2070 60 x 31 1/2 x 81 1/2	10	115/60/1	12	1400 / 1.9	5-20P	230 kg 506 lbs	280 kg 616 lbs	1584*840*2165.5 62 3/8 x 33 1/8 x 85 1/4
GNG-72	1828*800*2070 72 x 31 1/2 x 81 1/2	10	115/60/1	14	1600 / 2.2	5-20P	260 kg 572 lbs	330 kg 726 lbs	1888.8*840*2165.5 74 3/8 x 33 1/8 x 85 1/4
GNG-79	1998*800*2070 78 5/8 x 31 1/2 x 81 1/2	10	115/60/1	14	1600 / 2.2	5-20P	280 kg 616 lbs	350 kg 770 lbs	2058*840*2165.5 81 x 33 1/8 x 85 1/4
GNG-84	2134*800*2070 84 x 31 1/2 x 81 1/2	10	115/60/1	16	1600 / 2.2	5-20P	310 kg 682 lbs	380 kg 836 lbs	2193.6*840*2165.5 86 3/8 x 33 1/8 x 85 1/4



www.sub-equip.com

CAKE DISPLAY SHOWCASE



Features

- Energy efficient Low-e triple four sides right angle design, good insulation and display effect
- CFC free refrigerant and foam
- Electronic thermostat and Digital LED temperature display for accurate control and easy reading
- Adjustable heavy-duty shelves and concealed refrigerated drawers design
- LED light for better display
- Efficient electrothermal defogging
- With fan cooling system
- Auto defrosting and auto evaporation to prevent condensation
- Condensation pan efficiently evaporates excess water
- High quality marble base, stylish appearance, durable, easy to clean
- Easy to mount 3" casters (lockable in front) are standard with all units.
- Electrical: 115/60/1 with NEMA 5-15P plug, 10ft cord
- Dual Compressors & Dual Plug: FDC-79-4D and FDC-95-4D
- SGS & SGS Sanitation Certificate



www.sub-equip.com



-Interior temperature range: 2°C to 8°C (36°F to 46°F)

Model	Doors & Drawers	Exterior Dimensions (W x D x H) (mm/inch)	Shelves	Voltage (V/Hz/Ph)	Elite Series Amps	Power (W/HP)	NEMA PLUG	N.W	G.W	Packing Size (W x D x H) (mm/inch)
FD-48-2D	2 Doors & 2 Drawers	1200*800*1359 47 1/4 x 31 1/2 x 53 1/2	1	115/60/1	17	1468 / 1.97	5-15P	300 kg 660 lbs	330 kg 728 lbs	1280*890*1550 50 1/2 x 35 x 61
FD-60-3D	2 Doors & 3 Drawers	1500*800*1359 59 x 31 1/2 x 53 1/2	1	115/60/1	17	1468 / 1.97	5-15P	360 kg 792 lbs	400 kg 882 lbs	1580*890*1550 62 1/4 x 35 x 61
FD-71-3D	2 Doors & 3 Drawers	1800*800*1359 70 7/8 x 31 1/2 x 53 1/2	1	115/60/1	17	1502 / 2.01	5-15P	420 kg 924 lbs	470 kg 1037 lbs	1880*890*1550 74 x 35 x 61
FD-79-4D	4 Doors & 4 Drawers	2000*800*1359 78 3/4 x 31 1/2 x 53 1/2	1	115/60/1	24	1912 / 2.56	Dual 5-15P	490 kg 1078 lbs	540 kg 1191 lbs	2080*890*1550 82 x 35 x 61
FD-95-4D	4 Doors & 4 Drawers	2400*800*1359 94 1/2 x 31 1/2 x 53 1/2	1	115/60/1	24	2000 / 2.68	Dual 5-15P	540 kg 1188 lbs	600 kg 1323 lbs	2480*890*1550 97 3/4 x 35 x 61